



skyways<sup>®</sup>  
by landscape structures



# Contents

<b>Featured Designs</b>	5
<b>SkyWays® Shade Products</b>	50
<b>Rapid Release®</b>	67
<b>Manufacturing &amp; Maintenance</b>	68
<b>SkyWays Fabric Colors</b>	70
<b>SkyWays Post Colors</b>	IBC

**FRONT COVER,  
BACK COVER AND LEFT:**

**May Nissen Park**  
Livermore, California  
*Custom Shade*

# The Best Ways to Keep Your Cool

**SkyWays® by Landscape Structures provides cool and reliable shade for any play, rest or activity area.** From small shade to big shade, decorative shade to themed shade, we have flexible and stylish options for everywhere people like to gather.

Years of experience providing shade in some of the world's sunniest locales has led to the development of the industry's standard in shade structures. SkyWays products are designed to meet the demands of both heat and sun, shielding people from up to 97 percent of UV rays and keeping environments as much as 30-degrees cooler on the steamiest of days.

As an AISC Certified Fabricator, we apply our proven capabilities in our manufacturing facility in Dallas. All to ensure that SkyWays products always offer the most versatile ways to give your community some much needed heat and sun protection while making a strong visual impact that you can be proud of.

**Lincoln Heights  
Recreation Center**  
Los Angeles, California  
*Integrated Shade:  
Hexagon Deck*



**Hawksmoor Park**  
Winter Garden, Florida  
*4-Point Hypar Sail*





**Lincoln Heights  
Recreation Center**  
Los Angeles, California  
*Integrated Shade: Netplex®  
Integrated Shade:  
Hexagon Deck*





**Doral Glades**  
Doral, Florida  
*Custom Shade*



**Terra Park**  
Johnston, Iowa  
*Custom Inverted  
Conic Shade*





**Gregory M Fotia**  
**Memorial Playground**  
Hilton Head,  
South Carolina  
*Custom Shade*





**Doral Legacy Park**  
Doral, Florida  
*Cantilever Curve Shades*





May Nissen Park  
Livermore, California  
*Custom Shade*





**Kleiner Park Bandshell**  
Meridian, Idaho  
*Custom Shade*





**Branford Park**

Pacoima, California

*Integrated Shade: Swings*

*Integrated Shade: ZipKrooz®*

*Integrated Shade:*

*Hexagon Deck & Extended*

*Hexagon Deck*



**Lowcountry  
Celebration Park**  
Hilton Head,  
South Carolina  
*Custom Shade*





**Holmes County  
Training Center**  
Holmesville, Ohio  
*Integrated Shade:  
Sway Fun® Glider  
Integrated Shade: ZipKrooz®*





**Whispering Rock**  
Gilbert, Arizona  
*Double Layer Hexagon*






**Hoover Recreation Center**  
Los Angeles, California  
*Integrated Shade:*  
*Netplex®*  
*Integrated Shade: Swings*







**Douglas Park**  
Miami, Florida  
*Joined Tension Sails*



**City of Sevierville**  
Sevierville, Tennessee  
*Integrated Shade:*  
*Lunar Blast®*





**Liberty Landing**  
Delano, Minnesota  
*Integrated Shade:  
Tree Tops*





**Freedom Park**  
Ridgecrest, California  
*Hip and Double  
Cantilever Pyramid*





**Sycamore Park**  
Brentwood, California  
*3-Point Tension Sails*





**Firefighters Park**  
Margate, Florida  
*6-Post Super Hip*



**The Fields at RFK**  
Washington, D.C.  
*Single Post Cantilever  
Wrap-Around  
Cantilever Hips  
Integrated Shade: Netplex®*





**Kansas City Zoo**  
Kansas City, Missouri  
*Joined Tension Sails*





**Sun City Festival  
Dog Park**  
Buckeye, Arizona  
*Joined Tension Sails*





# SkyWays® Shapes

**SkyWays shade products are available in almost any shape or size,** perfect for anywhere you need shade—at the ball field, at the beach, over a parking lot. You'll be able to find that just-right fit with SkyWays shade products.

Don't see the size, configuration or attachment method that you're looking for? Let us know! We can create the ideal custom solution to fit the unique requirements of your environment.

<b>SkyWays Hip</b>	52	<b>SkyWays Triangle Sail</b>	59
<b>SkyWays Two Post Hip, SkyWays Super Hip</b>	53	<b>SkyWays Single Post Hypar Sail</b>	60
<b>SkyWays Cantilever Hip</b>	54	<b>SkyWays Hypar Sail</b>	61
<b>SkyWays Cantilever Hip, Back-to-Back</b>	55	<b>SkyWays Integrated Shade with Netplex®</b>	62
<b>SkyWays Pyramid and Peak</b>	56	<b>SkyWays Integrated Shade with Swings</b>	63
<b>SkyWays Single Post Pyramid</b>	57	<b>SkyWays Integrated Shade with Sway Fun®</b>	
<b>SkyWays Octagon, SkyWays Hexagon,</b>		<b>Glider, SkyWays Integrated Shade</b>	
<b>SkyWays Hexagon Double Layer</b>	58	<b>with ZipKrooz®</b>	64
		<b>SkyWays Integrated Shade with Lunar Blast®</b>	65

**Griffith Park**  
Los Angeles, California  
*Cantilever Single Post  
Pyramid*



## SkyWays® Hip

This cost-effective shade solution is a great value when you need sun coverage over large outdoor areas.

- Single or multi-panel options
- Multiple hips can be joined and/or extended to share posts
- Typical individual size: Up to 40' x 40'
- Additional sizes available
- Entry heights: Any
- Rapid Release® available

### A. Individual Hip

### B. Multi-Panel Hip

### C. Joined/Extended Hip



A.



B.



C.



A.

### SkyWays Two Post Hip

Supported by just two columns, this shape provides lots of shade.

- Typical size: 10' x 15' to 16' x 24'
- Additional sizes available
- Entry heights: Any
- Rapid Release available

### SkyWays Super Hip

Achieve big shade at an affordable price.

- Typical size: Over 40' x 40'
- Additional sizes available
- Entry heights: Any

A. SkyWays Two Post Hip

B. SkyWays Super Hip



B.

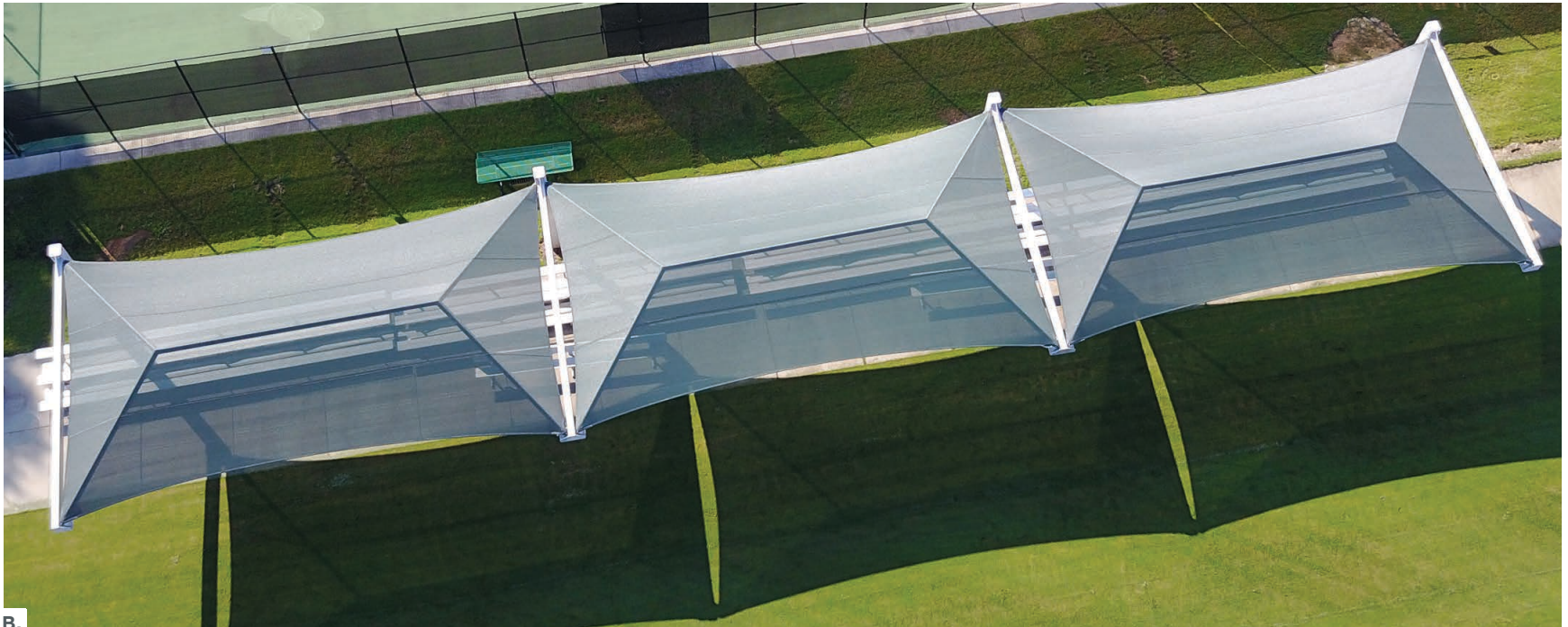
### **SkyWays® Cantilever Hip**

Designed for spaces that need to keep posts to a minimum and out of the way, this shade solution extends from posts on one side, creating a cool, open feel.

- Multiple cantilevered hips can be extended to share posts
- Typical individual size: 10' x 10' to 20' x 40'
- Additional sizes available
- Entry heights: Any
- Rapid Release® available

#### **A. Individual Cantilever Hip**

#### **B. Extended Cantilever Hips**





A.

### SkyWays Cantilever Hip, Back-to-Back

Center-positioned posts allow the shades to cantilever out from the middle—spreading shade all around.

- Multiple cantilevered hips can be extended to share posts
- Typical size: 10' x 10' to 40' x 40'
- Additional sizes available
- Entry heights: Any
- Rapid Release available

### A. Cantilever Hip, Back to Back B. Extended Cantilever Hip, Back to Back



B.

## SkyWays®

### Pyramid and Peak

Perched atop four posts of equal or varying heights, pyramid and peak shades are both beautiful and functional.

- Multiple pyramids and peaks can be extended to share posts
- Typical individual size: 10' x 10' to 40' x 40'
- Additional sizes available
- Entry heights: Any
- Rapid Release® available

#### A. Individual Peak

#### B. Individual Pyramid

#### C. Joined Peak



A.



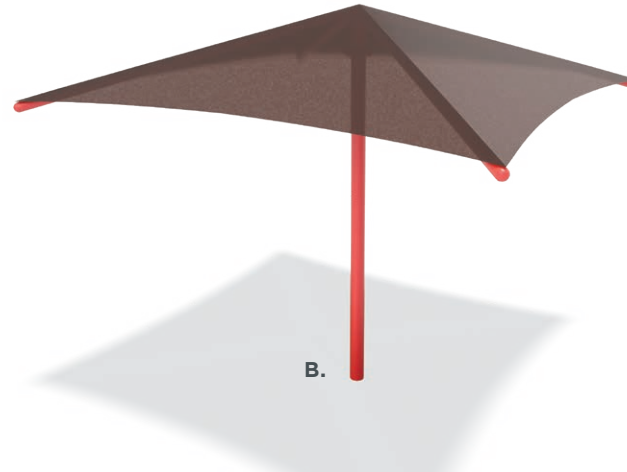
B.



C.



A.



B.

## SkyWays Single Post Pyramid

Designed with one post to provide shade in a concentrated area.

- Shade can be cantilevered to keep the support post out of the way
- Two cantilevered pyramids can share a single post
- Typical size: 10' x 10' to 20' x 20'
- Additional sizes available
- Entry heights: Any
- Rapid Release available

**A. Cantilever Single Post Pyramid**

**B. Single Post Pyramid**

**C. Double Cantilever Pyramid**



C.

## SkyWays® Octagon

Large, round areas can be completely shaded with an Octagon shade.

- Single or multi-panel options
- Typical size:  
35' to 80' Diameter
- Additional sizes available
- Entry heights: Any
- Rapid Release® available up to 40' diameter

## SkyWays Hexagon Double Layer

Block even more sun with the overlapping panels of the SkyWays Hexagon Double Layer—and enjoy the unique design aesthetic that's achieved with the layered fabric panels.

- Typical size:  
20' to 80' Diameter
- Entry heights: Any

## SkyWays Hexagon

This alternative shape can accommodate large, round areas—perfect for the spherical Evos® and Weevos® playsystems.

- Single or multi-panel options
- Typical size:  
20' to 80' Diameter
- Additional sizes available
- Entry heights: Any
- Rapid Release® available up to 40' diameter

**A. SkyWays Octagon**

**B. SkyWays Hexagon Double Layer**

**C. SkyWays Hexagon**



**A.**



**B.**



**C.**



A.

### SkyWays Triangle Sail

This three-post design covers a large space and provides a unique look with varying column heights and entries.

- Multiple sails can be joined to share posts
- Typical individual size: Up to 40' with standard fabric
- Larger sizes also available
- Entry heights: Any
- Rapid Release® available

#### A. Individual Triangle Sail

#### B. Joined Triangle Sails



B.

## SkyWays® Single Post Hypar Sail

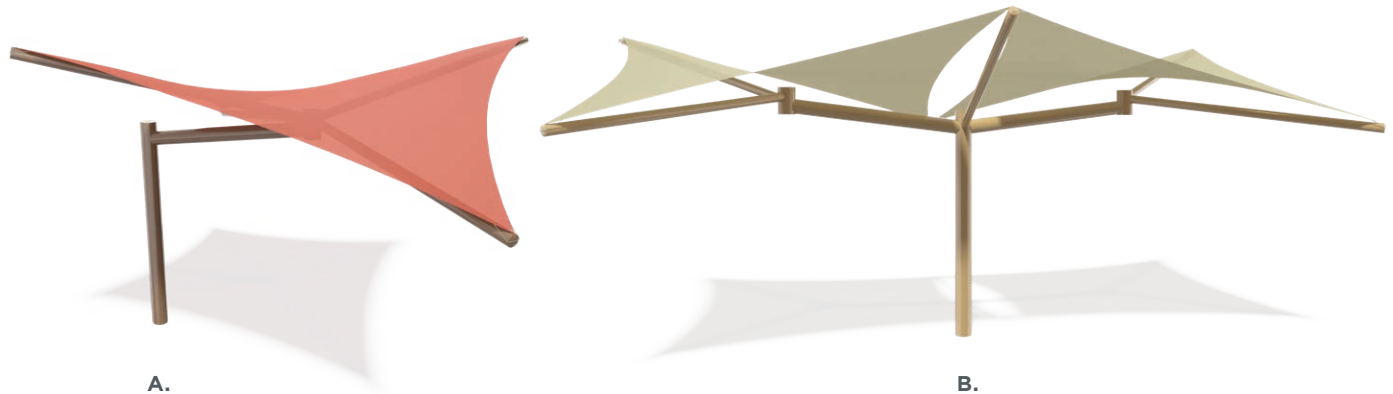
A single post minimizes the space required while the unique shape of the Hypar sail maximizes shade from the sun. It also easily integrates into play equipment.

- Typical size: 10' x 10' to 16' x 16'
- Entry heights: Any
- Rapid Release® available

### A. Cantilever Single Post Hypar

### B. Double Cantilever Hypar

### C. Single Post Hypar





A.

### SkyWays Hypar Sail

The hyperbolic shape of this shade provides great coverage from the sun as well as visual interest.

- Multiple sails can be joined to share posts
- Typical individual size: Up to 40' with standard fabric
- Larger sizes also available
- Entry heights: Any
- Rapid Release available

#### A. Individual Hypar Sail

#### B. Joined Hypar Sails



B.

## SkyWays® Integrated Shade with Netplex®

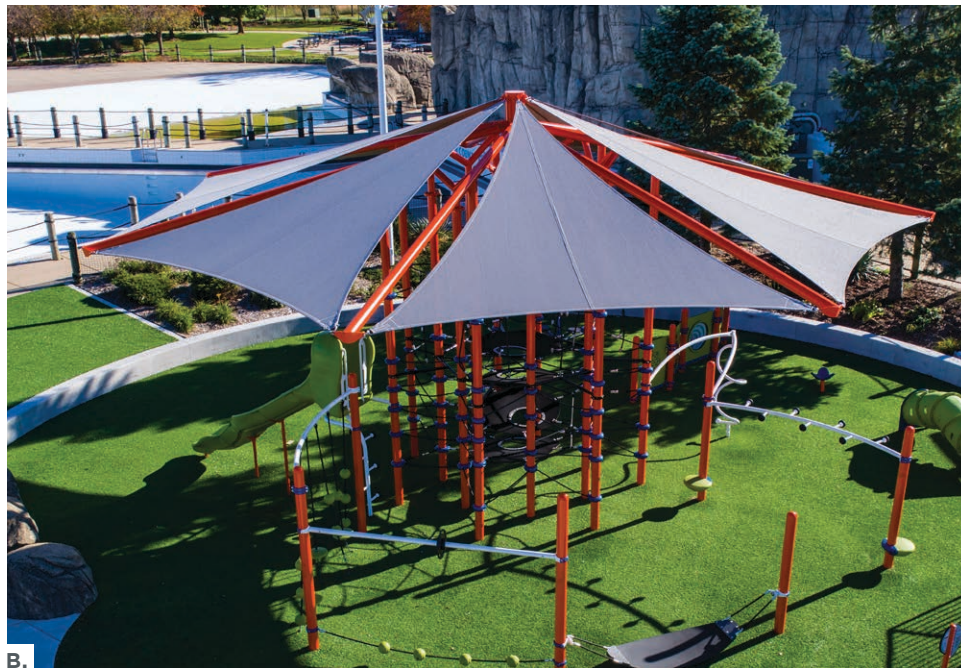
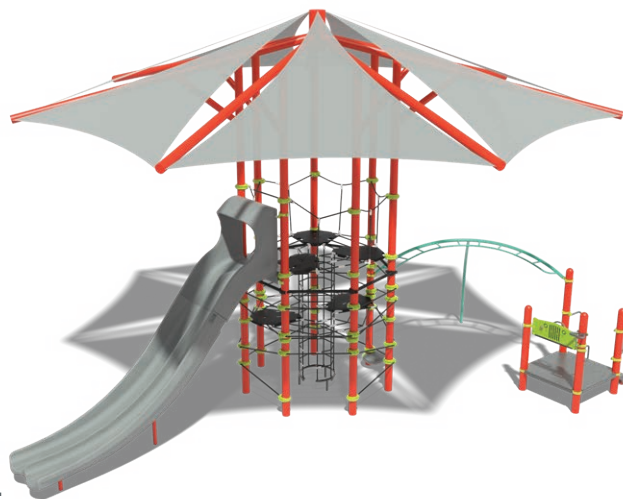
Shade can be integrated into Netplex structures to keep kids cool while playing.

- Available with 7-post, 13-post and 14-post Netplex

**A. 7-Post Netplex with Slide**

**B. 14-Post Netplex**

**C. 7-Post Netplex**





A.

## SkyWays Integrated Shade with Swings

Swinging is more fun when kids are cool and protected from the sun.

- Many shade shapes are available
- Available with single or multiple swing bays

**A. Hypar Shade over Swings**

**B. Two Post Hip over Swings**



B.

### **SkyWays® Integrated Shade with Sway Fun® Glider**

Built-in shade over the Sway Fun Glider keeps kids of all abilities out of the sun.

- Many designs available

### **SkyWays Integrated Shade with ZipKrooz®**

Extended posts support large shade to protect kids from the sun as they zip through the air.

- Many designs available

**A. Sway Fun Glider**

**B. ZipKrooz**



**A.**



**B.**



### **SkyWays Integrated Shade with Lunar Blast®**

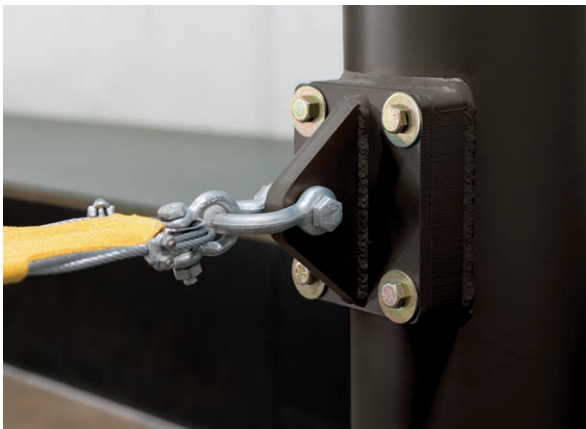
Kids can climb towards the sky while keeping cool in the shade. Additional play activities extend from the shade posts for more fun.



## Rapid Release<sup>®</sup> Technology

There are a variety of reasons why you may want to remove and reinstall your canopy. The changing seasons, to prepare for inclement weather, a desire for a new color scheme. Fortunately, we've made it quick and easy for you with our patented Rapid Release<sup>®</sup> system for SkyWays<sup>®</sup> shade products.

We've designed an adjustable mechanism to quickly release your shades and to ensure that you achieve proper tensioning while reinstalling the canopy with no struggle.



**Tension Sail**



**Multi-Panel Fabric**



**Single Top Fabric**

U.S. Patent numbers 10,731,376 and 10,731,694 and other patent pending

## Made with Expertise

Making the most of the expanded space and capabilities that our facility offers, our experienced team designs and builds only the most exceptional shade products. At every point in the process—from designing and engineering to welding and powdercoating the steel in-house to cutting and sewing the fabric—attention to detail is paired with an unwavering commitment to lasting quality and satisfaction.

It's a point of pride to see our state-of-the-art shade products soaring into the skies. We take that pride back with us, infusing each new order with the precision and dedication necessary to deliver outstanding shade creations.

We are certified to both ISO 9001:2015 and ISO 14001:2015 standards. These provide guidelines for establishing our quality and environmental programs ([www.iso.org](http://www.iso.org)). Offering a process-oriented structure, ISO 9001:2015 is customer focused and emphasizes continuous improvement in quality while ISO 14001:2015 drives us toward operating in a manner that is environmentally conscious.

Additionally, being an AISC Certified Fabricator and a Clark County Approved Fabricator demonstrates our commitment to building in quality from the beginning. By complying with the rigorous standards established by some of the most recognized quality certification programs for the structural steel industry, you can feel confident about the superior quality of our shade products.



## Easy Care and Maintenance

- All shades use corrosion-resistant steel fastening hardware
- Recommend yearly washing using a power washer or water hose and a light detergent
- The SkyWays® design permits fasteners to be easily removed for fabric storage

## Specifications

- SkyWays standard shade products are designed to the IBC 2015 building code and are engineered to withstand wind speed up to 105 mph and snow load up to 5 psf. Different specifications may be custom designed.

## Warranty

Landscape Structures Inc. ("Manufacturer") warrants that all equipment sold will conform in kind and in quality to the specifications manual for the products identified in the Acknowledgment of Order and will be free of defects in manufacturing and material. Manufacturer further warrants:

**20-Year Limited Warranty** on all SkyWays® and CoolToppers® steel components against structural failure due to material or manufacturing defects.

**10-Year Limited Warranty** On all SkyWays® and CoolToppers® fabric and thread against failure from significant fading, deterioration, breakdown, mildew, outdoor heat, cold or discoloration. This warranty is limited to the design loads as stated in the manual. Should the fabric need to be replaced under the warranty, Manufacturer will manufacture and ship a new fabric at no charge for the first 6 years, thereafter pro-rated at 18% per annum over the last 4 years. This warranty applies to standard colors only.

**3-Year Limited Warranty** On all other parts, including Rapid Release®, against failure due to corrosion/natural deterioration or manufacturing defects.

The environment near a saltwater coast can be extremely corrosive. Some corrosion and/or deterioration is considered "normal wear" in this environment. Product installed within 500 yards (457 meters) of a saltwater shoreline will only be covered for half the period of the standard product warranty, up to a maximum of five years, for defects caused by corrosion. Products installed in direct contact with saltwater or that are subjected to salt spray are not covered by the standard warranty for any defects caused by corrosion.

This warranty does not include any cosmetic issues or wear and tear from normal use of the product, or misuse or abuse of the product. It is valid only if the equipment is erected to conform with Landscape Structures' installation instructions and maintained according to the maintenance procedures furnished by Landscapes Structures Inc. Maintenance is particularly critical in regions where dirt and/or sand may cause abrasion of the fabric.

This warranty is void if conditions exceed local building codes.

**To see the entire warranty, visit [playlsi.com](http://playlsi.com).**

## **Landscape Structures shade fabric creates an island of sun-safe cool**

Our breathable shade fabric is made of high-density polyethylene (HDPE). Designed to block up to 97 percent of the sun's UV rays and keep temperatures up to 30-degrees cooler, it is also resistant to mildew, fading and ultra-violet rays, making it a long-lasting, great-looking addition to any space.

SkyWays® uses knitted mid-duty HDPE as our standard, one of the strongest standard fabrics available in the industry, leading in tensile, tear and burst strengths. We also have heavy-duty fabric available as a custom option for very large spans. We reinforce all corners with 16-ounce non-tear vinyl and all pockets with protective webbing where steel cable enters or exits. SkyWays products are engineered for super durability.

## **Customize Your Shade Even Further**

Own your shaded spaces. Add a logo or design to your shade fabric—or have our design team create one for you. Show your colors with custom multi-panel tops as shown below. We are also able to integrate electrical elements such as handholes, lighting mounts/connections and more.

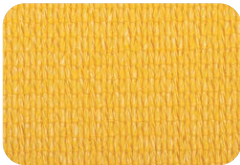
## **Fabric Information**

- Lead and phthalate free
- ASTM E-84: Class A
- CSFM 1237.1 Title 19: Certified
- NFPA 701: Conforms

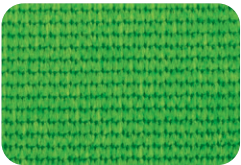


SkyWays®  
Flame-Retardant  
Fabric

Skyways and CoolToppers® Shade products fabrics are designed to block up to 90% of UV rays and keep playground temperatures 30 degrees cooler. Our fabrics are stringently tested and conform to FR standards worldwide.



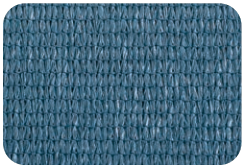
Yellow FR



Grass FR



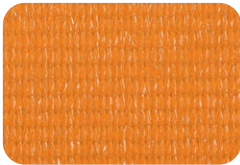
Tan FR



Sky Blue FR



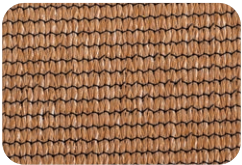
River Gum FR



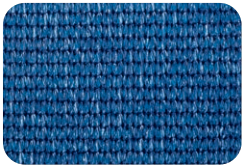
Orange FR



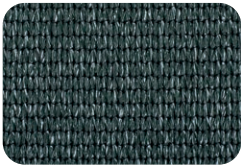
Natural FR



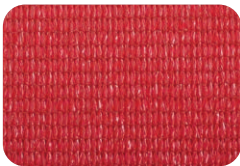
Cedar FR



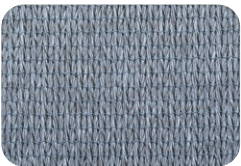
Blue FR



Pine Green FR



Cherry Red FR



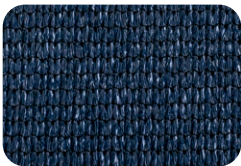
Metallic Silver FR



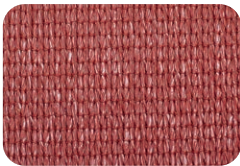
Brown FR



Lagoon FR



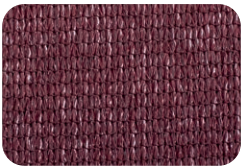
Denim FR



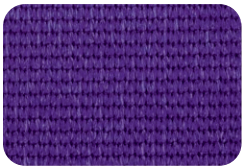
Cayenne FR



Gun Metal FR



Deep Ochre FR



Purple FR



Black FR

Color	Black FR	Blue FR	Brown FR	Cayenne FR	Cedar FR	Cherry Red FR	Deep Ochre FR	Denim FR	Grass FR	Gun Metal FR	Lagoon FR	Metallic Silver FR	Natural FR	Orange FR	Pine Green FR	Purple FR	Rivergum FR	Sky Blue FR	Tan FR	Yellow FR
Cover Factor %	95.0	92.0	96.0	93.0	93.0	90.0	91.0	94.0	90.0	96.0	94.0	92.0	94.0	92.0	93.0	91.0	94.0	94.0	93.0	93.0
Shade Factor %	94.8	88.1	94.3	87.3	88.4	80.0	90.5	93.1	87.3	94.5	89.5	89.7	78.3	80.8	92.9	87.9	89.7	91.3	86.1	77.5
UVR Block %	95.0	91.5	96.0	93.3	93.6	90.0	91.7	93.8	91.0	96.5	93.4	92.4	93.5	92.4	93.6	91.4	94.0	94.0	93.4	93.2

# Post Colors

ProShield® finish is specifically designed to withstand the demands of extreme heat, harsh climates, moisture and UV exposure. ProShield finish combines a specially formulated primer with a high-quality, architectural-grade, Super-Durable, TGIC polyester powdercoat. No lead-based paints.

Denim	Slate	Metallic Silver
Blue	Purple	Cool Silver Matte
Pebble	Plum	Matte Gray
Seafoam	Maroon	Carbon
Lagoon	Berry	Black
Sky	Cranberry Red	Brown
Peacock	Red	Acorn
Grass	Paprika	Copper
Green	Orange	Tan
Pine Green	Tangerine	Dune
Leaf	Yellow	Vanilla
Limon	Honey	White
Sprout	Buttercup	



Landscape Structures Inc.  
601 7th St. South  
Delano, MN 55328-8605  
763.972.5200  
888.438.6574  
[playlsi.com](http://playlsi.com)

