

# poligon®

PARK ARCHITECTURE

Shelters • Gazebos • Pavilions





The background of the entire page is a faded, artistic photograph of a park pavilion with a red roof and white columns. Several seagulls are depicted in flight across the sky, some in the foreground and others further back, creating a sense of depth and movement.

“When we build, let us think that we build forever.”

**John Ruskin**  
**Art & Architecture Essayist**  
**1819 - 1900**

When a park is created, so too is a community's image. These spaces become destinations, landmarks, and visual calling cards for years to come. Successful park development addresses many considerations to create a functional and inviting locale that gives communities a place to relax, play, make memories, and take pride in.

Each site calls out for its own shapes, colors, and design. Park structures can be designed to follow along with surrounding architecture, or lead the way with a bold direction of their own. Examples of both aesthetics can be seen in this catalog. As you browse through it, we hope it assists you in creating the ideal park setting for your community.

Just as each site is distinctive, there are no 'stock' buildings at Poligon. Each building is made one-at-a-time to customer requirements. Customers select shapes, colors, ornamentation, roofing and special features. Computerized and automated manufacturing techniques speed this process up, while keeping the price down.

Since 1964, we at PorterCorp have been committed to providing a better way to create individually-tailored parks that communities can be proud of. For today and for future generations, we do our best to make you proud to not just have a 'park shelter,' but to have chosen a Poligon.

A handwritten signature in black ink that reads "Bill Porter". The signature is fluid and cursive, with the first letters of "Bill" and "Porter" being capitalized and prominent.

Bill Porter

**Bill Porter**  
President  
PorterCorp

**ON THE COVER:**

**Empire State Carousel Pavilion - Farmers Museum**  
(PLC 60 frame)  
Architect: Altonview Architects PC, Cooperstown, NY

**Page 79 for sizes and line drawings.**

*Photo by Richard & Elizabeth Walker*



## CUSTOM SHELTERS.....4

## SPECIALTY SHELTERS

|                          |    |
|--------------------------|----|
| Neo Classic Series ..... | 14 |
| Arch Shelters.....       | 16 |
| Monoslopes .....         | 17 |
| Western Skyline .....    | 18 |
| "Tree" Shelters .....    | 19 |

## VIA SERIES

|  |    |
|--|----|
| Portal and Wayside .....                     | 20 |
| Crossing, Gateway, and Nested Shelters ..... | 22 |

## DODECAGONS

|  |    |
|--|----|
| Pavilions and Clerestory Pavilions ..... | 24 |
|--|----|

## OCTAGONS

|  |    |
|--|----|
| Carmel Series Gazebos.....                         | 26 |
| Period Style Gazebos<br>(Wooster & San Jose) ..... | 30 |
| Mackinac<br>(Elongated Clerestory Octagon) .....   | 31 |
| Octagon Shelters.....                              | 32 |

## HEXAGONS

|  |    |
|--|----|
| Oxford Series Gazebos.....                           | 34 |
| Ironwood Series Gazebos<br>(Dual-pitch hexagon)..... | 36 |
| Tiara<br>(Elongated Clerestory Hexagon) .....        | 37 |
| Hexagon Shelters .....                               | 38 |

## SQUARES & RECTANGLES

|   |    |
|---|----|
| Marquee<br>(Clerestory Hip Roof Shelters).....    | 40 |
| Chelsea<br>(Clerestory Gable Roof Shelters) ..... | 41 |
| Hip Roof Shelters.....                            | 42 |
| Gable Roof Shelters .....                         | 44 |
| Carnival (Clerestory Squares) .....               | 46 |
| Multi-Squares.....                                | 47 |
| Square Shelters .....                             | 48 |

## TRELLISES

|                          |    |
|--------------------------|----|
| Greco & Concord .....    | 50 |
| Basic Trellises.....     | 51 |
| Santa Fe & Pergola ..... | 52 |

## SMALL SHELTERS

|                                   |    |
|-----------------------------------|----|
| Kiosk and Info Centers.....       | 53 |
| Dugout Covers.....                | 53 |
| Sunshelters .....                 | 54 |
| Portable Lavatory Enclosure ..... | 56 |
| Semi-Enclosed & Enclosed .....    | 56 |

## SITE FURNISHINGS

|   |    |
|---|----|
| Integrated Seating.....                     | 58 |
| Benches .....                               | 59 |
| Bike Racks .....                            | 60 |
| Bollards.....                               | 61 |
| Smokstak <sup>™</sup> Ash Receptacles ..... | 61 |

## PARASOL<sup>™</sup> FABRIC ROOF SHELTERS.....62

## PINNACLE<sup>™</sup> WOOD SHELTERS.....68

## LINE DRAWINGS.....74

## MANUFACTURING

|   |     |
|---|-----|
| The Polygon System .....                          | 72  |
| LEEDS Information.....                            | 73  |
| Shelter Nomenclature .....                        | 73  |
| Picnic Table Capacity, Lightning Protection ..... | 96  |
| Low Reveal, Column Covers, Cupolas.....           | 97  |
| Railings, Ornamentation .....                     | 98  |
| Columns.....                                      | 100 |
| Roofing Systems .....                             | 101 |
| Poli-5000 Finishing System .....                  | 102 |
| Color Chart.....                                  | 103 |





**Coghlin Park - Saugatuck, MI**  
40' Hexagon with two Gable Roof Shelter wings  
Architect: M.C. Smith Associates of Grand Rapids, MI





**Veteran's Plaza - Avalon, NJ**  
Custom 24' Carnival with Neo Classic Columns  
Architect: Taylor Design Group of Mount Laurel, NJ





**Mississippi Riverwalk - Dubuque, IA**  
58' Octagon with cupola  
Architect: URS Corporation, Minneapolis, MN



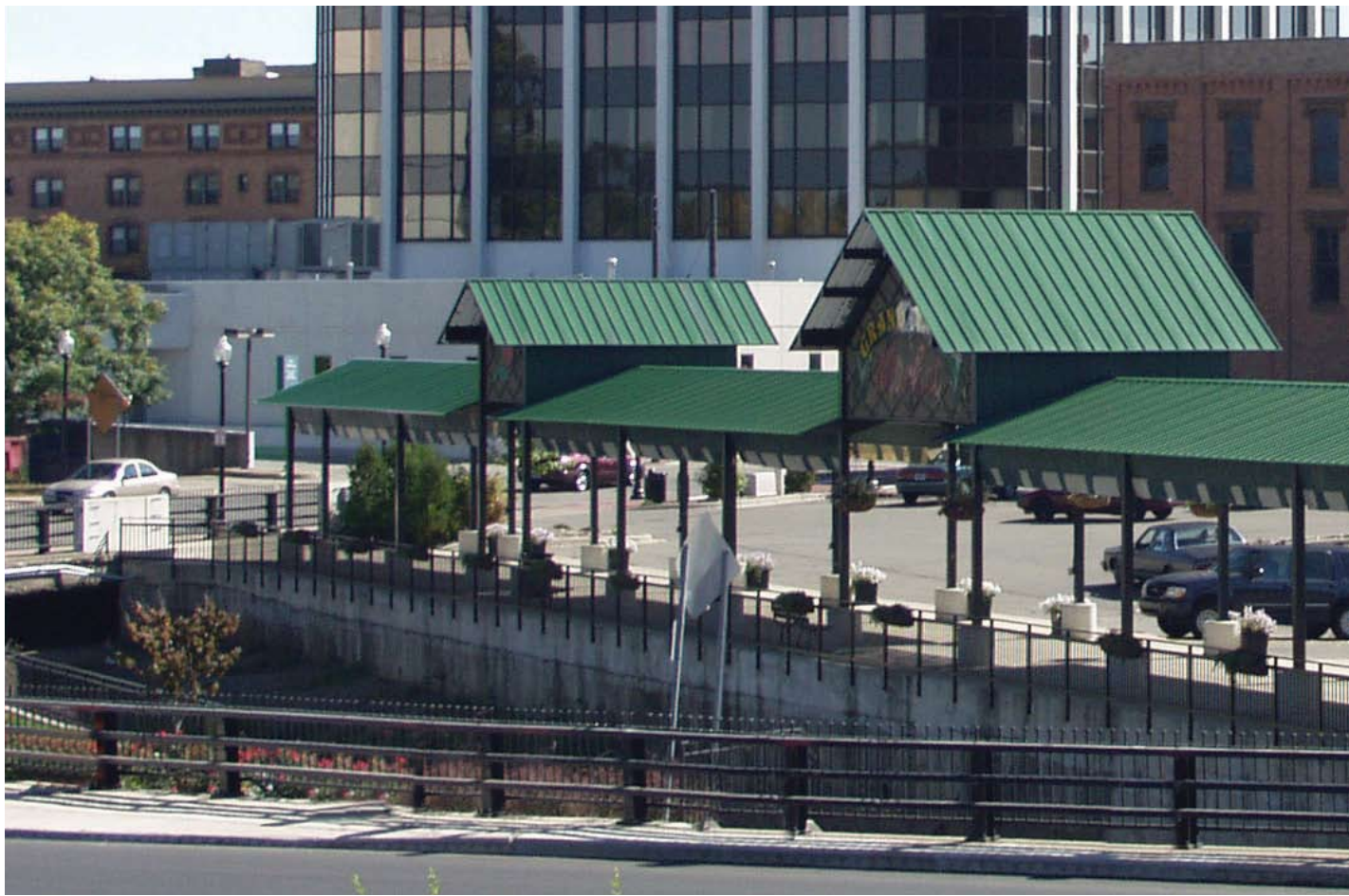


**Cortez City Park - Cortez, CO**  
 24' x 104' Amphitheater  
 Architect: EDAW, Inc. of Fort Collins, CO.



**"Level Playing Fields" ADA Accessible Outdoor Facility - Edison, NJ**  
 Custom Walkway Cover and Tiara Shelter









**Farmers Market - Jackson, MI**  
20' x 270' Gable Roof Shelter



**Northeast Community Center - Dalton, GA**  
90' Oxford hexagonal shelter with 40' x 50' Gable Roof Shelter wings





**Mystic Hills - Jackson, MI**  
Custom Crossing / Wayside / Trellis



**Grand Valley  
State University -  
Allegan, MI**  
Custom Trellis  
Architect: Design Plus, Inc.  
Grand Rapids, MI





**Wilson Point Park - Baltimore, MD**  
Custom Trellis  
Architect: Hord, Coplan, Macht of  
Baltimore, MD



**Bus Stop Shelter & Information Kiosk, University of Georgia, Athens Campus - Athens, GA**  
Custom, 10' x 18' rectangular shelter with side wings  
Architect: Robert & Company of Atlanta, GA



**Princess House, Inc. - Taunton, MA**  
Custom Walkway Canopy.  
Architect: Roth and Seelen, Inc. of Hingham, MA.



**Cory Street Green Gazebo at the University of Findlay - Findlay, OH**  
Custom octagonal gazebo with four gables  
Architect: Rooney, Clinger, Murray  
Architects of Findlay, OH



**Metzler Ranch - Castle Rock, CO**  
Custom, 20' x 40' T-shaped Hip Roof



**Gulf Coast Town Center - Fort Myers, FL**  
Custom, enclosed 27' Carmel octagonal shelter



**Pond B Gazebo - Boynton Beach, FL**  
Custom, 28' x 48' T-Shaped Gable Roof Shelter  
Architect/Engineer: Camp, Dresser & McKee, Inc.





# Neo Classic Shelters

NCS, NCR, NCH, NCO, NCG





## ABOUT THE NEO CLASSIC SERIES

Polygon's Neo Classic line of shelters faithfully replicates the look of antiquity with modern materials. Steel frames are enveloped with formed steel and fiberglass components, fashioned with great attention to authentic detailing, to create this traditional look.

The Tuscan style columns on Neo Classic shelters have gently tapering shafts with both upper capitals and lower plinth blocks. Custom-molded, field painted fiberglass wraps surround a steel column beneath. The overhead cornice and entablature are formed from heavy gauge powder coated steel sheeting, manufactured for easy bolt-together assembly in the field. The steel structure, steel overhead elements, and fiberglass column wraps are all fire resistant, with class "A" fire-rated resins used in the column construction.

The structural insulated panel (SIP) roof panel system used on all Polygon Neo Classic shelters makes for quick installation, an attractive interior surface and an ideal substrate for a variety of roofing options.

The Neo Classic series are available in Octagon, Hexagon, Square, Rectangle, and walkway layouts.



- 1 NCO 28 - Temecula, CA
- 2 NCR 14x14 - Temecula, CA
- 3 NCR 11x133 - Wilmington, NC
- 3 NCR 11x133 - Wilmington, NC

**Page 74 for sizes and line drawings.**





# Arch

ARC

Pictured:  
ARC 24 x 36 - Baltimore, MD  
**Page 75 for sizes and line drawings.**







# Monoslope

MSL

Pictured:  
MSL 30 x 40 - St. Petersburg, FL

**Poligon Monoslopes are available  
in three styles of roof overhang.**

***Page 76 for sizes, styles, and line drawings.***



# Western Skyline

WSL

## ABOUT THE WESTERN SKYLINE

The winner of Polygon's "Reflecting Place" competition, Western Skyline was designed by Salt Lake City firm Landmark Design, Inc., and donated to the City of Salt Lake.

**1** WSL 20 - Salt Lake City, UT

**2** WSL 28 - (w/optional 2x6 T&G roof deck, column surrounds by others) - Allen, TX

**Page 76 for sizes and line drawings.**







1



2

# Single Tree

STS



3



4

# Double Tree

DTS

- 1 STS 30 - Folsom, CA
- 2 STS 20 - Dallas, TX
- 3 DTS 20 x 40 - Denton, TX
- 4 DTS 20 x 40 - Vista, CA

Page 77 for sizes and line drawings.



# Portal PRT







- 1** PRT 11 (w/GXO 40) - Murphy, TX
- 2** WSD 30 x 40 - Winston-Salem, NC

**Pages 77 & 78 for sizes and line drawings.**

Wayside WSD





# Crossing CRS

- 1** CRS 24 - Lafayette, IN
- 2** GTW 23 - Castle Rock, CO
- 3** CGN 24-19 - N. Richland Hills, TX

*Page 78 & 79 for sizes and line draw-*



# Gateway

GTW



# Nested Crossing/Gateway

CGN





# Pavilion

PVA



# Clerestory Pavilion

PLC

- 1** PVA 86 - Edison, NJ
- 2** PLC 86 (enclosure materials by others) - Agawam, MA
- 3** PLC 60 - Jacksonville, FL
- 4** PLC 86 (glazing by others) - Seattle, WA

*Page 79 & 80 for sizes and line drawings.*







2



4



# Carmel (2-tier)

GCO2







- 1** GCO2 32 - Canandaigua, NY
- 2** GCO2 20 - Hobart, IN

*Pages 82 for sizes and line drawings.*



# Grand Carmel (3-tier)

GCO3







**1** GCO3 58 (w/custom features) - Eden Prairie, MN

**2** GCO3 40 (w/clerestory louvres)- Bryan, OH

**3** GCO3 48 - Winston-Salem, NC

*Pages 81 for sizes and line drawings.*





1

# Wooster

WOO

The Wooster is only available with a structural (SIP) roof deck, over which any roofing option can be installed. Cupolas are standard on Wooster. Railing and ornamentation are optional.

- 1 WOO 18 - Wooster, OH
- 2 WOO 18 (w/integrated seating - Kernersville, NC
- 3 Custom WOO 22 - Lansing, MI

See page 82 for sizes and line drawings.



2



3



# San Jose

GSJ

San Jose is only available with a structural (SIP) roof deck, over which any roofing option can be installed. Cupolas are standard on San Jose. Railings and ornamentation are optional.

Pictured:  
GSJ 16 - Chicago Heights, IL  
*Page 82 for sizes and line drawings.*



# Mackinac

(Clerestory Elongated  
Octagon)  
MAC

Pictured:  
MAC 50 x 74 - Dahlgren, VA  
*Page 83 for sizes and line drawings.*





Octagon  
OTC





- 1 OTC 32's
- 2 OTC 40 - Brush, CO (roof by others)
- 3 OTC 32 - Pentwater, MI
- 4 OTC 28 - Charlotte, NC

Page 83 & 84 for sizes and line



# Oxford

GXO, GXO2

- 1 GXO2 28 - Holland, MI
- 2 GXO 22 - Dayton, OH
- 3 GXO2 32 - Falls TWP, PA
- 4 GXO2 64 & GXO 22 -  
Moreno Valley, CA

*Page 85 for sizes and line drawings.*











1



2

# Ironwood

(Dual Pitch Hexagonal)  
GWI

- 1 GWI 42 (column surrounds by others) - Murphy, TX
- 2 GWI 24 (roof by others) - Riverside, CA

*Page 86 for sizes and line drawings.*





# Tiara

(Elongated Clerestory Hexagon)

TIA

Pictured:  
TIA 35 x 51 - Holland, MI  
***Page 86 for sizes and line drawings.***





1



2



3





# Hexagon

HXE

- 1** HXE 64 - San Diego, CA
- 2** HXE 20 - Plainfield, IL
- 3** HXE 24's - Tonto Nat'l Forest, AZ
- 4** HXE 58 - Stockton, CA
- 5** HXE 20 (with optional integrated seating) - Wyoming, MI

**Page 87 for sizes and line drawings.**





- 1** MAR 30 x 64 - Independence, MO
- 2** MAR 20 x 24 - Lakeside, CA
- 3** MAR 14 x 24 - Camas, WA

*Page 87 for sizes and line drawings.*

# Marquee

(Clerestory Hip Roof)





- 1** CHE 40 x 64 (column surrounds by others) - Dallas, TX
- 2** CHE 20 x 24 - Roseville, MN
- 3** CHE 20 x 34 - Clemmens, NC

*Page 88 for sizes and line drawings.*

# Chelsea

(Clerestory Gable Roof)

CHE









4



5



6

- 1 RAM 30 x 64 - San Diego, CA
  - 2 RAM 50 x 110 - Niantic, CT
  - 3 RAM 16 x 24 - North Amityville, NY
  - 4 RAM 24 x 34 - Pensacola, FL
  - 5 RAM 24 x 34 - Bessemer, AL
  - 6 RAM 20 x 34 - West Palm Beach, FL
- Page 88 for sizes and line drawings.

# Hip Roof Shelter

RAM





1



2





- 1** REK 40 x 64 - Muskegon, MI
- 2** REK 30 x 104 - San Diego, CA
- 3** REK 24 x 24 (with cupola) - Freeport, NY
- 4** REK 50 x 104 - Pensacola, FL
- 5** REK 20 x 24 - Pomona, CA

**Gable Roof Shelters are expandable in 20' increments, or as a single 30' bay.**

*Page 89 for sizes and line drawings.*

# Gable Roof Shelter

REK





# Carnival

(Clerestory Square)

CAR

- 1** CAR 30 - Muskegon, MI
- 2** CAR 24 - San Diego, CA

Page 89 for sizes and line drawings.







- 1** Custom P4S-40's - Coronado, CA
- 2** One 20', three 10' P4S's - Plano, TX
- 3** P4S-15's - Lakeland, FL
- 4** P4S-20's (column surrounds by others) - Ballwin, MO

Page 90 for sizes and line drawings.

# Multi-Squares

P4S









- 1 SQR 36 - Plano, TX
- 2 SQR 24 (with cupola) - St. Clair Shores, MI
- 3 SQR 16 (column surrounds by others) - West Olive, MI
- 4 SQR 12 - Hickam AFB, HI

Page 90 for sizes and line drawings.

Square  
SQR



# Concord CON



1



# Greco GRE

3





# Basic Trellises

TRE-F, TRE-G, TRE-A

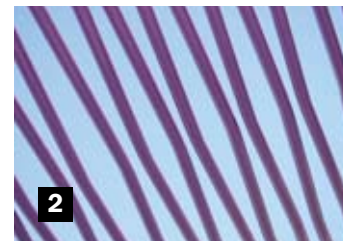
Basic Trellises are available in Flat, Arch and Gable units. Units function as standalones or in modular configurations.

- 1 CON 82 - Salt Lake City, UT
- 2 CON 82 (detail) - Salt Lake City, UT
- 3 GRE 21 - Salt Lake City, UT
- 4 TRE-F, Broomfield, CO
- 5 TRE-G - Westchester, IL
- 6 TRE-F-G-F - Salt Lake City, UT

Pages 91 & 92 for sizes, line drawings, and additional Trellis styles.







#### ABOUT THE SANTA FE

Santa Fe is another winning design (by Jesse Scott, ASLA) from Polygon's "Reflecting Place" competition. With a latilla-style roof, laser cut corbels and optional medallions, the Santa Fe makes a dynamic statement in any landscape!

# Santa Fe

SFE

- 1** SFE 20 x 20 - Holland, MI
- 2** Latilla-style roof detail
- 3** Detail of optional medallion-style corbel

**Page 92 for sizes and line drawings.**

# Pergola

PER

Pictured:  
PER 16 - Salt Lake City, UT

**Page 93 for sizes and line drawings.**





# Kiosks & Info Centers

KSK, IFO

Three-sided Kiosks are available in single-column and three-column models.

Four-sided Info Centers are available in single-column, four-column, and double display width four-column models.



Pictured:  
KSK 3-8 - Three Column Kiosk - Shoreview, MN

*Page 93 for sizes, line drawings, and other styles available.*



**1** DUG CC - Littleton, CO  
**2** DUG OC - Orlando, FL

*Page 93 for sizes, line drawings, and additional styles.*

Polygon Dugouts are available in center-column, off-center column, and cantilever style models.



# Dugouts

DUG-CC, DUG-OC



# Sunshelters

SSG, SSH







Polygon Sunshelters are available in Gable Roof and Hip Roof models with the following pictured options (and others shown on page 94):

- |          |   |          |  |
|----------|---|----------|--|
| <b>1</b> | SSH 12X12 - Open (Hip Roof Shelter)                 | <b>5</b> | SSG 8X9 S57 - With Picnic Table                  |
| <b>2</b> | SSG 8X9 - Open (Gable Roof Shelter)                 | <b>6</b> | SSG 8X9 S42 - With Display Board                 |
| <b>3</b> | SSG 8X9 S53 - Single or Dual Steel Benches          | <b>7</b> | SSH 12X12 - Hip Roof Sunshelters w/picnic tables |
| <b>4</b> | SSG 8X9 S58 - Single or Dual Plastic Lumber Benches | <b>8</b> | SSH 12X12 - Muskegon, MI                         |

Page 94 for sizes, line drawings, and additional options.





# Portable Lavatory Enclosures

PLE, PLX

Page 94 for sizes and line drawings.

Poligon Portable Lavatory Enclosures come standard with perforated metal screening on three sides, and are available with standard eave overhang (PLE) and extended eave overhang (PLX).

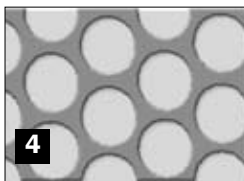
- 1 PLE HC2 - Broomfield, CO
- 2 PLE HC2 - Castle Rock, CO



# Semi-Enclosed Shelters

- 3 RAM 50X84 S10 - 50' x 84' Hip Roof Shelter w/perforated metal screening - San Ysidro, CA
- 4 S10 - Detail, perforated steel
- 5 SQR 16 S11 - w/polycarbonate glazing - Columbus, OH

Any size Poligon shelter can be semi-enclosed. Material can be either 18 gauge, 36" wide perforated steel or a 1/4" thick transparent polycarbonate glazing.







- 1 XPLC 60 - enclosed Clerestory Pavilion, XGCO2 40 - enclosed Oxford - Erie Zoo, PA
- 2 XGCO2 28 - enclosed Carmel - Fort Myers, FL
- 3 XHXE 48 - enclosed Hexagon - Hot Spring, AR
- 4 XGCO3 48 - enclosed Grand Carmel - Davenport, IA
- 5 XHXE 48 - partially enclosed Hexagon - Pascagoula, MS

#### ADAPT ENCLOSED POLIGONS

PorterCorp classifies enclosed structural steel or timber-frame buildings as Adapt™ buildings.

Along with the steel frame common to all Polygon shelters, the Adapt Building System uses Structural Insulated Panels (SIPs) for constructing the walls and the roof.

Polygon/Adapt structures are limited to frame, panel, and fastener components. Windows, doors, drywall, exterior siding, interior walls, paint, electrical, plumbing, trim materials, etc. are not included.

SIPs must be covered with an appropriate thermal barrier on the inside (one half inch of drywall is common) depending on codes and use. For more important information on building with SIPs visit [www.portersips.com](http://www.portersips.com).

**adapt**™ Enclosed Buildings  
BUILDING SYSTEMS





## Integrated Seating

Seating becomes part of the shelter with all steel Chicago Series benches. Seating is made to the exact size to fit between columns and powder coated a specified color.

When seats are adjacent in a polygonal shelter, the resulting triangular space between them can be filled with a small built-in table. These tables make an attractive and functional addition.

- 1** HXE 20 S52 - Wyoming, MI
- 2** GXO 16 S70 - Dayton, OH





- 1** BEN B - 5 Chicago freestanding bench
- 2** BEN A - 5 Chicago backless bench
- 3** BEN C - 5 Chicago direct bury bench
- 4** FVS - 5x6 Vine Street Bench with fabric top

## Benches

Polygon's ruggedly constructed Chicago Series benches are available in 1' increments and come in Backed, Backless and Post-Mounted models. Also available is the Vine Street Bench, which comes with a fabric top in a choice of 13 colors (see page 67 for fabric top choices).





## Gripper™ Bike Racks

Gripper Bike Racks wedge only the tire of the bike, preventing damage to the frame. Rear wheel racking is not only space-saving, it is more stable and ideal for locking the frame to the rack.

The Post model is the most efficient, holding up to 14 bikes by their rear tires. The linear Bar Gripper is also available in single-sided or double-sided models.

- 1** BPA 14 - Post Gripper model
- 2** BPA 14 - Post Gripper -Holland, MI
- 3** BPA 14 - Insertion detail, Post Gripper
- 4** BPA 14 - Lock detail, Post Gripper
- 5** BPB 6 - Bar Gripper model

**Page 95 for sizes and line drawings.**





## Smokstak™

Make cigarette disposal a class act with the clean, colorful powder coated steel Smokstak.

The Dakota model measures 3-1/2" round x 39" high, has a removable top and is light enough to pick up and empty. The Raleigh model is 5" square x 39" high. Disposal is eased by a tilting top and a special removable bucket.

- 1** SMK R - Dakota Model Smokstak
- 2** SMK S - Raleigh Model Smokstak



## Bollards

Polygon Bollards are made to coordinate with a site. Pick just the right color in a Poli-5000 finish, and a style from those available or submit a custom design. Buried, baseplate with anchors, removable or collapsing mounting systems are all available.

- 1** BLR A - Guardian Bollard (left), BLR B - Post Bollard (right)
- 2** BLR C - Windsor Bollard (left), BLR D - Picket Bollard (right)
- 3** BLR E - Sentry Bollard



# parasol<sup>TM</sup>

FABRIC COVERED SHADE SHELTERS

[www.parasolnet.com](http://www.parasolnet.com)



**Pictured:**

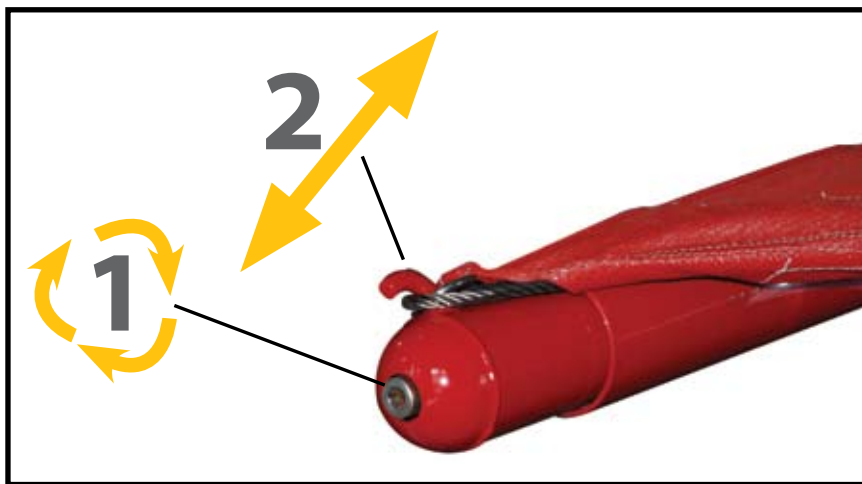
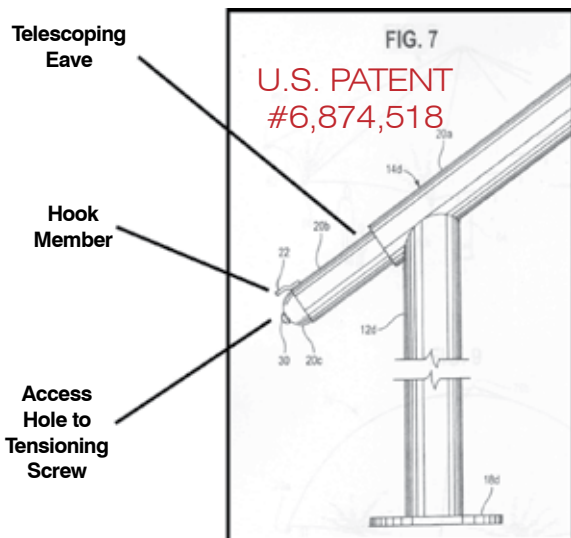
Twenty 16' Sundials<sup>TM</sup>

Goodman Pool, Madison, WI

Pivoting shelters indicated by red tops,  
non-pivoting indicated by green

Photo courtesy of Madison Parks Staff, Goodman Pool, Madison, WI

## The Best and Easiest Fabric Tensioning System



It only takes the twist of a screw on Parasol's tensioner to activate the patented telescoping eave system, making top installation and removal a breeze.





FSD 10 - Holland, MI

## The Sundial™

FSD (pivoting), FOC (non-pivoting)

Pivoting square shelter with eight locking positions for all-day shade. 8', 10', and 16' pivoting and non-pivoting models available.



8 x 96 Cantilevered  
Transit Shelter

## Cantilevered Shelters

FCL

Available in sizes ranging 8'x12' to 16'x96'



18 x 18 Gemini I

## Gemini Series Cantilever

FGM

Available in unlimited single or dual cantilever bays.





**Umbrellas** FUM  
Available in sizes from 8' - 30'.



24' x 36' Hipped Roof Shelter

**Hipped Roof Shelters**  
Available in sizes from 14' x 14' to 60' x 60'.

FHP



12' x 20' Vine St. Walkway

**Vine Street Series**  
Walkway covers and more available!

FVS



## Arched Roof Shelters

FSP

Available in sizes from 18' x 20' - 30' x 42'.



21'x41' Arched Roof Shelter

## Amphitheaters

FAM

Available in 26' x 26' and 32' x 32' models.



26' Amphitheater

Temporary structures not intended for permanent installation.

## Sails

FSL

Spans up to 40'; column heights 12' - 22'.



parasol<sup>TM</sup>  
FABRIC COVERED SHADE SHELTERS

35' Sails





**Bleacher Covers** FBC  
Available in 12' x 18' and 12' x 24' models.



**Fabric Tree Shelters** FTR  
Available in 17', 20' and 25' models.



**Domes** FDM  
Available in sizes from 10' - 30'.





8 x 36 Ribbon Style Shelter

## Ribbon Style Shelters FRB

Available in sizes from 8' x 24' - 8' x 90'.



14 x 22 Double Tree-

## Double Tree FDT

Available in sizes up to 25' x 40'.



## Scorpio FSC

Available in sizes from 8' - 16'.



8 x 410 Cantilever Shelter  
St. Petersburg, FL



## Cygnus FCG

Available in sizes from 16' x 16' - 30' x 30'.



## Hexagon FHX

Available in sizes from 20' - 40'.

## Custom Shelters Available

Bring your custom fabric shelter designs to life! Our on-staff engineering team can assist with developing projects of any size and scope.

## Fabric Top Colors

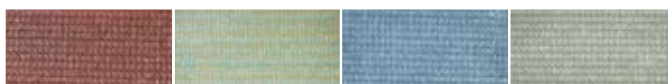


Aquatic Blue

Black

Brunswick Green

Cherry Red



Ochre Red

Rivergum Green

Sky Blue

Steel Grey



Desert Sand

Natural

Navy Blue

Turquoise

Yellow





Square Hipped WSQ  
12' - 36' sizes



Octagon WOT  
20' - 50' sizes





Band Shell WLL

WLL 50 - Sparta, MI



WSH 15 - Holland, MI

Sherwood WSH  
15' - 32' sizes



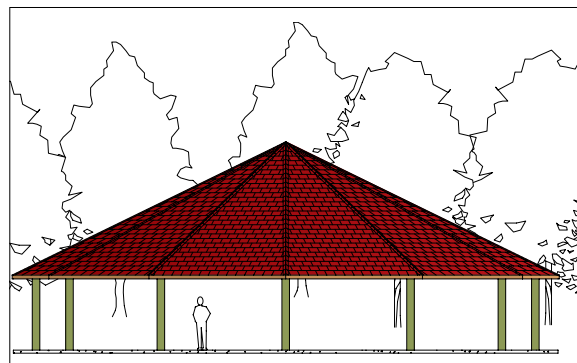
WLF 8 - Parkland, FL

Monoslope WLF

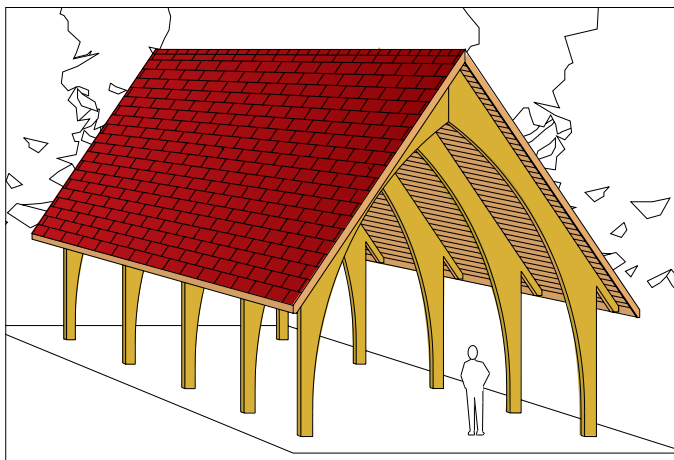




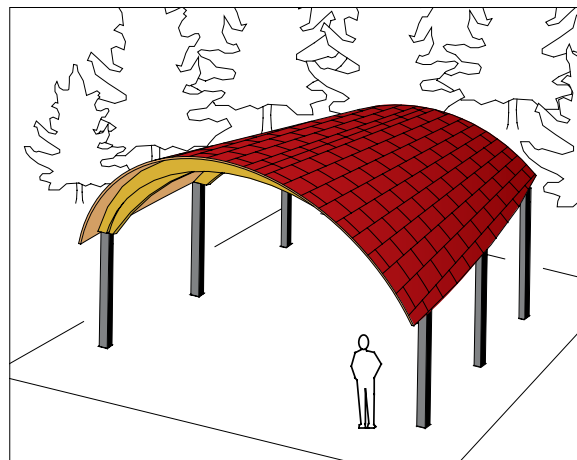
**Hexagons** WHX  
12' - 45' sizes



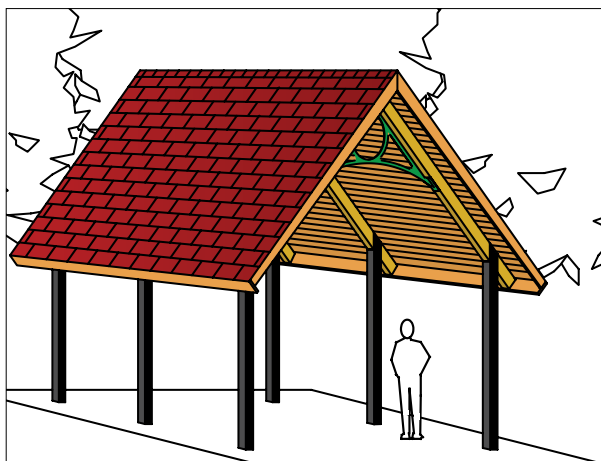
**Dodecagons** WDO  
60' - 80' sizes



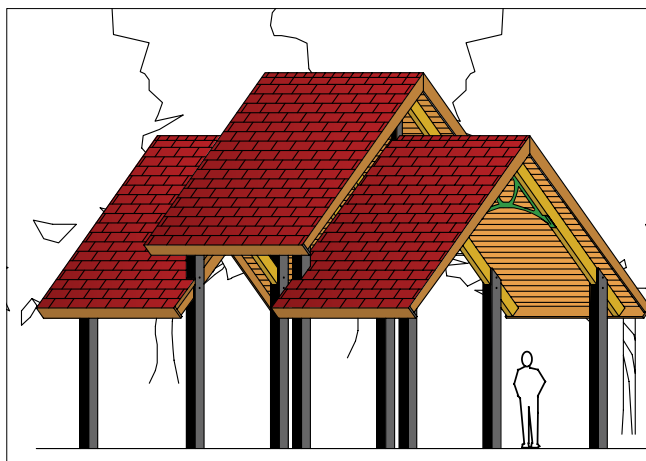
**Gothic Arch** WGA  
20' & 25' widths



**Amphitheater** WAT  
22' x 22' shown

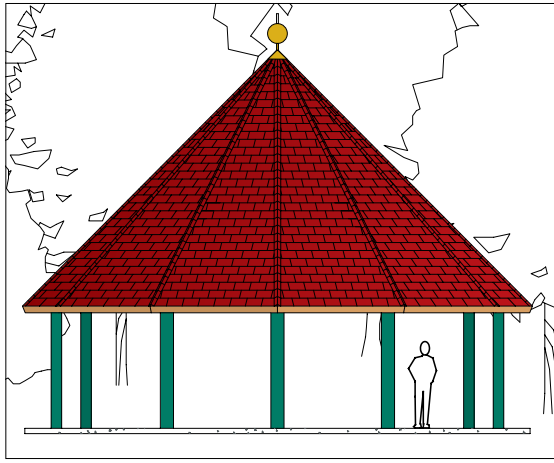


**Skyline** WSK  
16' - 24' widths



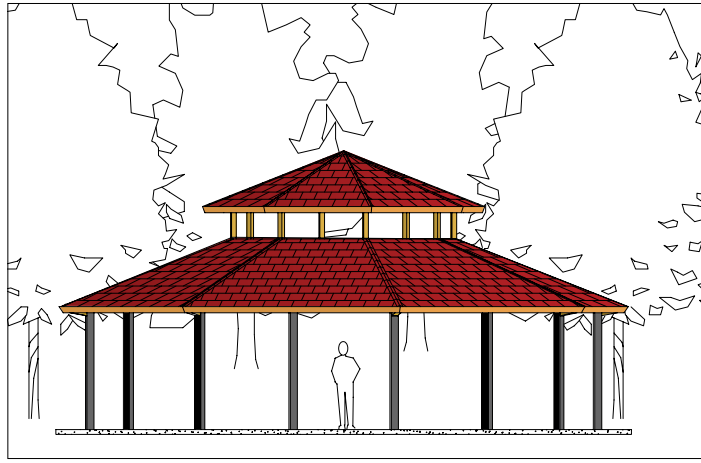
**Western Skyline** WWS  
20' x 28' shown





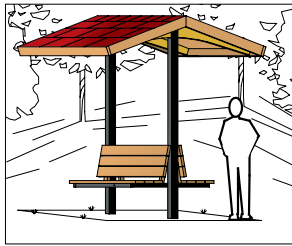
Hilltop (Hexagon)

WHT  
16' - 32' sizes



Clerestory Hexagon WDC

20' - 40' sizes



Back-to-Back Bench

WSS-S03

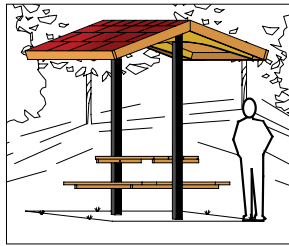
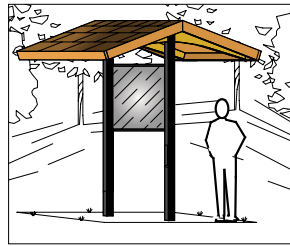


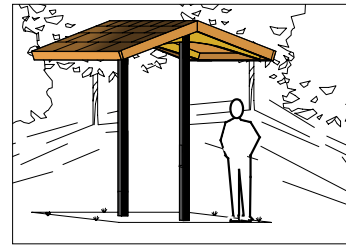
Table with Benches

WSS-S06



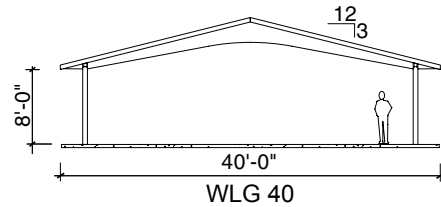
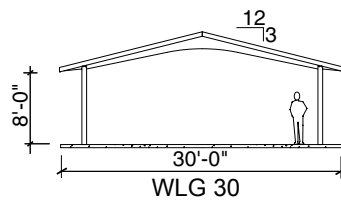
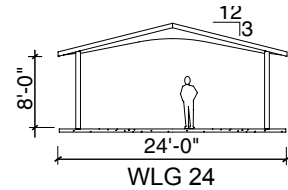
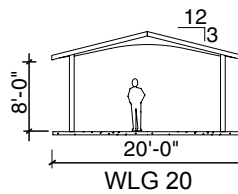
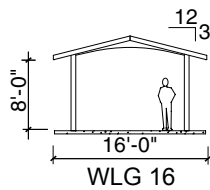
Covered Display

WSS-S40  
Single- or double-sided displays



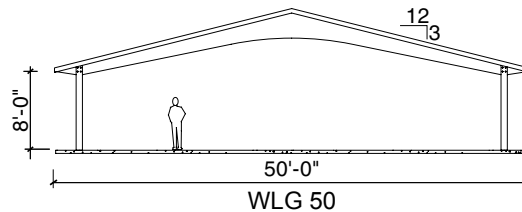
Sun Shelter

WSS



Low Pitch Gable

WL6  
Available 16'-50' widths, unlimited 8' bays





# THE POLIGON SYSTEM

Polygon shelters are bolt-together tubular steel frames, with a powder coat finish, that require no field welding. Roof decks are of either metal, tongue and groove southern yellow pine or structural insulated panels (with grooved beaded ceiling). This pre-engineered package is shipped as a knocked-down pre-fabricated kit that includes the structural frame, roof deck, fasteners, trim, optional ornamentation and installation instructions. Smaller shelters can be erected quickly by maintenance crews or skilled volunteer labor. Most large Polygon structures require professional installation. Footing details are designed by an engineer retained by the owner, or a Polygon engineer.



**Frames are easily bolted together with provided fasteners**



**No field welding is required during erection**



**Railing and ornamentation are installed with the frame**



**Frame is complete and ready for roofing**



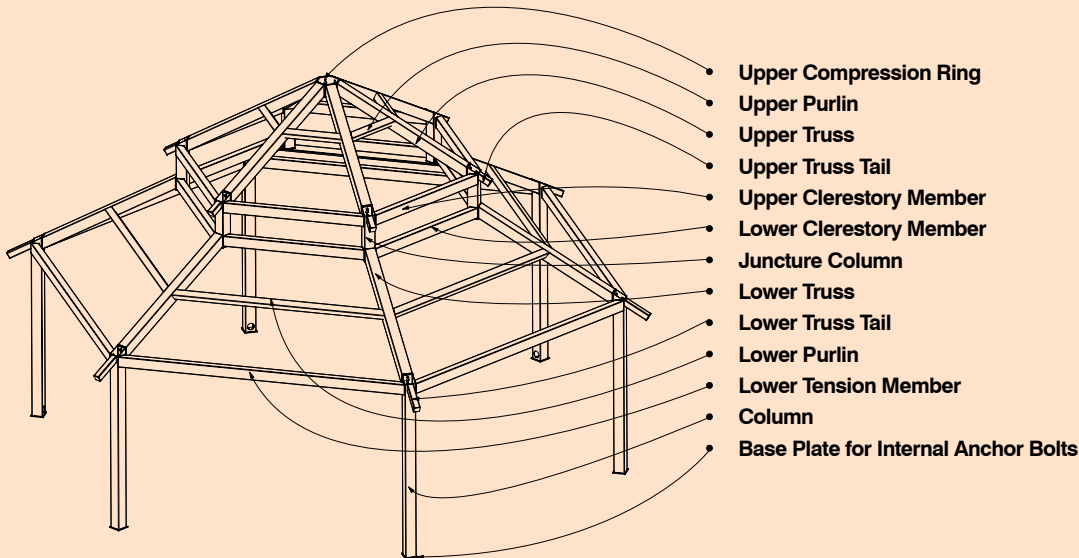
**The upper roofing is installed then the cupola**



**Installation of pre-cut roofing panels**



# SHELTER NOMENCLATURE



## LEED POINTS

How **PorterCorp** products can assist your project with LEED Certification



### What is LEED?

Leadership in Energy and Environmental Design (LEED) is a national standard developed by the United States Green Building Council (USGBC) to certify sustainable buildings. LEED buildings save energy, conserve resources, protect occupant health, and improve owners' bottom lines. LEED-NC (for New Construction) v2.2 is the most widely used standard. LEED utilizes a system of points awarded in six (6) environmental categories for achieving specific levels of sustainable performance.

|   |   |
|---|---|
| <b>Sustainable Sites, Credit 4.2 - Alternative Transportation</b><br><br>Provide bicycle racks and/or storage for at least 5% of all building users.  | 1   |
| <b>Sustainable Sites, Credit 7.1 - Heat Island Effect/Non-Roof</b><br><br>Option 1: Provide shade for site hardcape. Polygon, Parasol, and Pinnacle products meet this requirement.<br>or<br>Option 2: At least 50% of parking spaces need to be covered, any roof that is shading or covering parking must have a Solar Reflectance Index (SRI) of 29 or more. Certain roof colors for Polygon and Pinnacle meet this requirement. Contact your Sales Representative or Polygon Customer Service for colors. | 1   |
| <b>Sustainable Sites, Credit 7.2 - Heat Island Effect/Roof</b><br><br>Use roofing materials for a low slope roof ( $\leq 2:12$ ) of 78 minimum SRI and for a steep slope roof ( $> 2:12$ ) of 29 SRI minimum. Certain roof colors for Polygon and Pinnacle meet this requirement. Contact your Sales Representative or Polygon Customer Service for colors.   | 1   |
| <b>Material and Resources, Construction Waste Management, Credit 2.1 - Divert 50% from Disposal and Credit 2.2 - Divert 75% from Disposal</b><br><br>PorterCorp's packaging materials can be recycled.  | 1 w/Credit 2.1, 1 w/Credit 2.2, and 1 Exemplary Performance, Innovation in Design Divert 95%.<br>Total potential points: <b>3</b>           |
| <b>Materials and Resources, Recycled Content, Credit 4.1 - Specify 10% Post Consumer; Credit 4.2 - Specify 20% Post Consumer and 50% Pre-Consumer</b><br><br>Polygon and Parasol shelters and Polygon Site Furnishings meet the criteria for both Credit 4.1 and Credit 4.2. Many Polygon shelters also meet the Exemplary Performance Innovation in Design 30% recycled content requirement.   | 1 w/Credit 4.1, 1 w/Credit 4.2, and 1 Exemplary Performance, Innovation in Design 30% Recycled Content.<br>Total potential points: <b>3</b> |
| <b>Indoor Environmental Quality, Environmental Tobacco Smoke (ETS) Control Prerequisite 2</b><br><br>Polygon Smokstaks, benches, and shelters can assist by creating a designated smoking area.   | Required  |



# LINE DRAWINGS

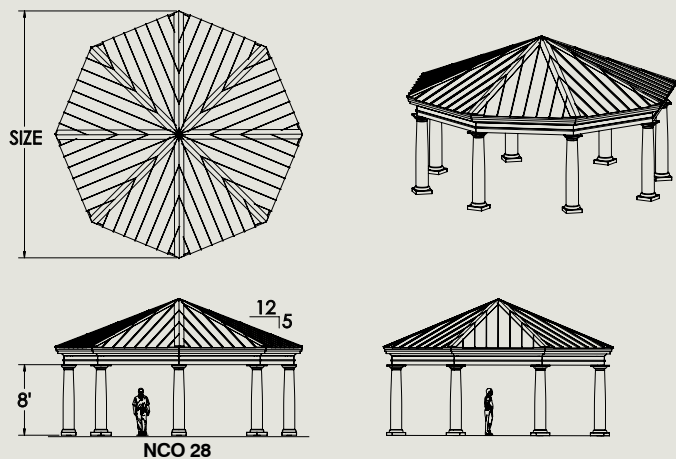
Drawing packages may be downloaded at [www.poligon.com](http://www.poligon.com).

UPB (Under Perimeter Beam) refers to the lowest height of structural members. The use of railing and/or ornamentation will increase the UPB. All sizes in feet unless otherwise noted. Please refer to the BIN (Building Identification Number) when ordering or specifying shelters. Cupolas, ornamentation, and sundry items are optional on most buildings, except as noted. Polygon shelters are copyrighted original designs.

## Neo Classic Octagon

NCO

From page 15



### Standard Sizes

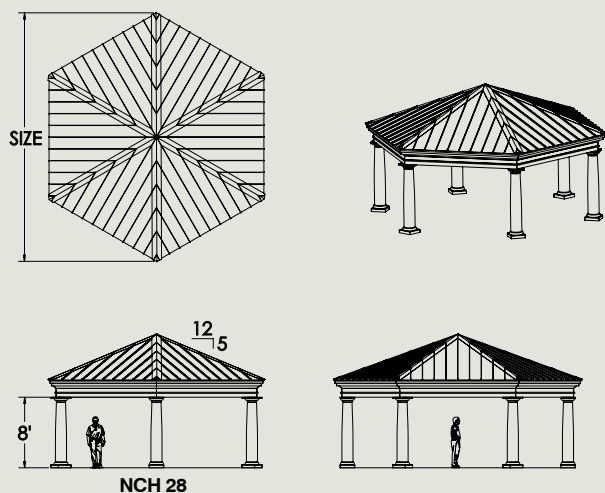
| BIN | Size |
|-----|------|
| NCO | 16   |
| NCO | 20   |
| NCO | 24   |
| NCO | 28   |
| NCO | 32   |
| NCO | 36   |
| NCO | 40   |

Neo Classic shelters use fiberglass reinforced polyester (FRP) column overlays to achieve appearance. Overlay installation requires blocking, fitting, surface filling, sanding and finish painting.

## Neo Classic Hexagon

NCH

From page 15



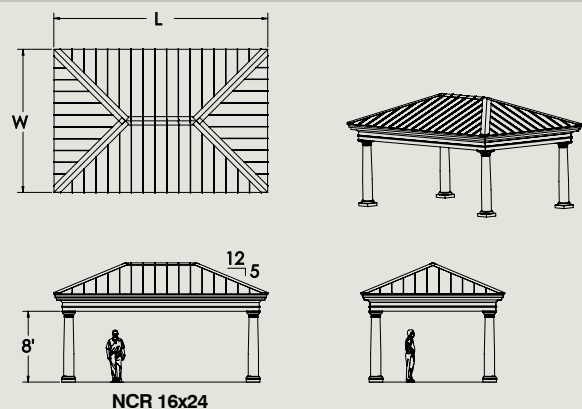
### Standard Sizes

| BIN | Size |
|-----|------|
| NCH | 16   |
| NCH | 20   |
| NCH | 24   |
| NCH | 28   |
| NCH | 32   |
| NCH | 36   |
| NCH | 40   |

## Neo Classic Hip Roof

NCR

From page 15



### Standard Sizes

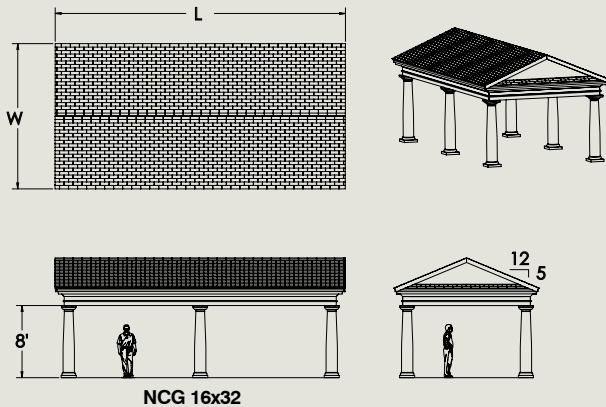
| BIN | W  | L  | # of Columns |
|-----|----|----|--------------|
| NCR | 16 | 24 | 4            |
| NCR | 16 | 32 | 6            |
| NCR | 20 | 24 | 4            |
| NCR | 20 | 32 | 6            |
| NCR | 24 | 28 | 8            |
| NCR | 24 | 32 | 8            |



# Neo Classic Gable Roof

NCG

From page 15



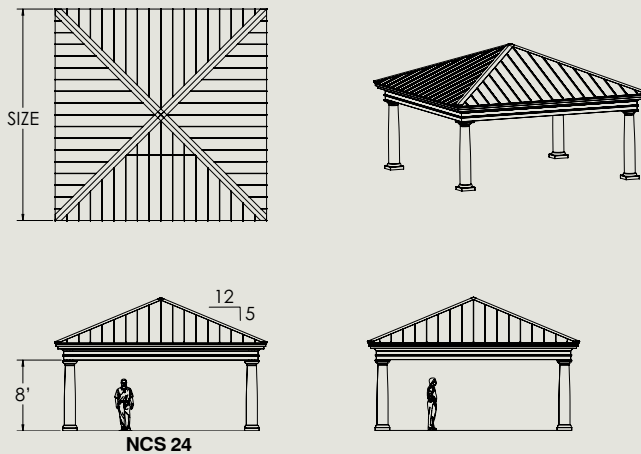
Standard Sizes

| BIN | W  | L  | # of Columns |
|-----|----|----|--------------|
| NCG | 16 | 24 | 4            |
| NCG | 16 | 32 | 6            |
| NCG | 20 | 24 | 4            |
| NCG | 20 | 32 | 6            |
| NCG | 24 | 28 | 8            |
| NCG | 24 | 32 | 8            |

# Neo Classic Square

NCS

From page 15



Standard Sizes

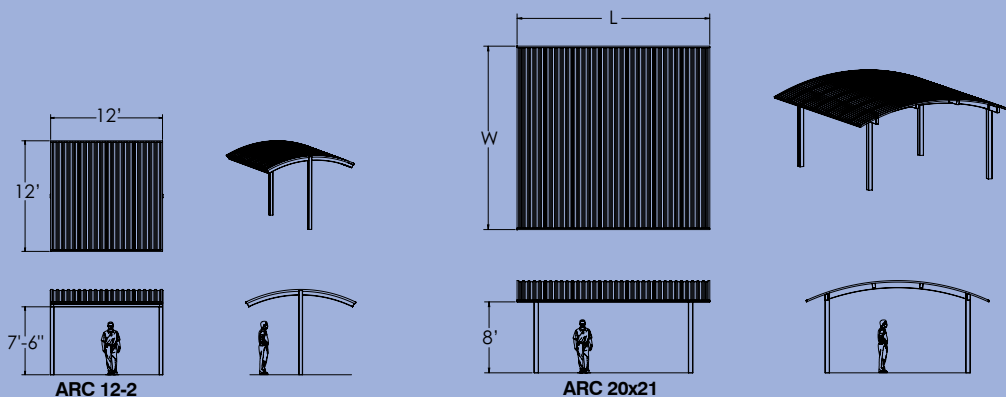
| BIN | Size | # of Columns |
|-----|------|--------------|
| NCS | 16   | 4            |
| NCS | 20   | 4            |
| NCS | 24   | 4            |
| NCS | 30   | 8            |

Neo Classic shelters use fiberglass reinforced polyester (FRP) column overlays to achieve appearance. Overlay installation requires blocking, fitting, surface filling, sanding and finish painting.

# Arch

ARC

From page 16



Standard Sizes

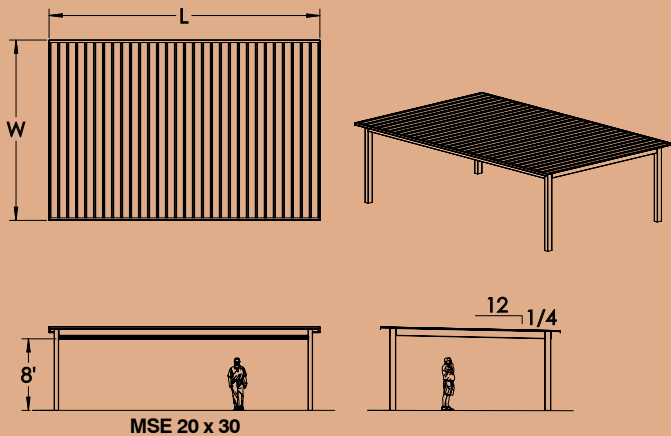
| BIN | W  | L  | # of Columns |
|-----|----|----|--------------|
| ARC | 12 | 12 | 2            |
| ARC | 16 | 18 | 4            |
| ARC | 16 | 33 | 6            |
| ARC | 20 | 21 | 4            |
| ARC | 20 | 30 | 6            |
| ARC | 20 | 39 | 6            |
| ARC | 30 | 30 | 6            |



# Monoslope

MSL

From page 17

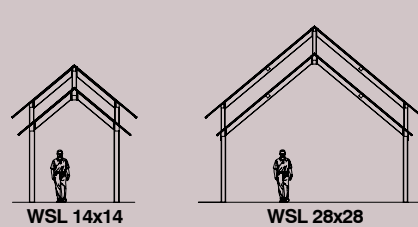
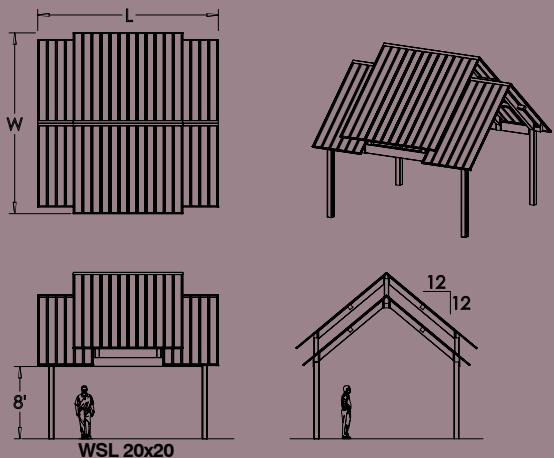


| Roof Style #1<br>MSL   | Roof Style #2<br>MSE | Roof Style #3<br>MSX |   |     |    |    |     |    |    |     |    |    |     |    |    |  |     |   |   |     |    |    |     |    |    |     |    |    |     |    |    |  |     |   |   |     |    |    |     |    |    |     |    |    |
|--|----------------------|----------------------|---|-----|----|----|-----|----|----|-----|----|----|-----|----|----|--|-----|---|---|-----|----|----|-----|----|----|-----|----|----|-----|----|----|--|-----|---|---|-----|----|----|-----|----|----|-----|----|----|
| Standard Sizes   | Standard Sizes       | Standard Sizes       |   |     |    |    |     |    |    |     |    |    |     |    |    |  |     |   |   |     |    |    |     |    |    |     |    |    |     |    |    |  |     |   |   |     |    |    |     |    |    |     |    |    |
| <table> <tr><th>BIN</th><th>W</th><th>L</th></tr> <tr><td>MSL</td><td>10</td><td>21</td></tr> <tr><td>MSL</td><td>16</td><td>30</td></tr> <tr><td>MSL</td><td>20</td><td>30</td></tr> <tr><td>MSL</td><td>26</td><td>30</td></tr> </table> | BIN                  | W                    | L | MSL | 10 | 21 | MSL | 16 | 30 | MSL | 20 | 30 | MSL | 26 | 30 | <table> <tr><th>BIN</th><th>W</th><th>L</th></tr> <tr><td>MSE</td><td>10</td><td>21</td></tr> <tr><td>MSE</td><td>16</td><td>30</td></tr> <tr><td>MSE</td><td>20</td><td>30</td></tr> <tr><td>MSE</td><td>26</td><td>30</td></tr> </table> | BIN | W | L | MSE | 10 | 21 | MSE | 16 | 30 | MSE | 20 | 30 | MSE | 26 | 30 | <table> <tr><th>BIN</th><th>W</th><th>L</th></tr> <tr><td>MSX</td><td>16</td><td>30</td></tr> <tr><td>MSX</td><td>20</td><td>30</td></tr> <tr><td>MSX</td><td>26</td><td>30</td></tr> </table> | BIN | W | L | MSX | 16 | 30 | MSX | 20 | 30 | MSX | 26 | 30 |
| BIN  | W                    | L                    |   |     |    |    |     |    |    |     |    |    |     |    |    |  |     |   |   |     |    |    |     |    |    |     |    |    |     |    |    |  |     |   |   |     |    |    |     |    |    |     |    |    |
| MSL  | 10                   | 21                   |   |     |    |    |     |    |    |     |    |    |     |    |    |  |     |   |   |     |    |    |     |    |    |     |    |    |     |    |    |  |     |   |   |     |    |    |     |    |    |     |    |    |
| MSL  | 16                   | 30                   |   |     |    |    |     |    |    |     |    |    |     |    |    |  |     |   |   |     |    |    |     |    |    |     |    |    |     |    |    |  |     |   |   |     |    |    |     |    |    |     |    |    |
| MSL  | 20                   | 30                   |   |     |    |    |     |    |    |     |    |    |     |    |    |  |     |   |   |     |    |    |     |    |    |     |    |    |     |    |    |  |     |   |   |     |    |    |     |    |    |     |    |    |
| MSL  | 26                   | 30                   |   |     |    |    |     |    |    |     |    |    |     |    |    |  |     |   |   |     |    |    |     |    |    |     |    |    |     |    |    |  |     |   |   |     |    |    |     |    |    |     |    |    |
| BIN  | W                    | L                    |   |     |    |    |     |    |    |     |    |    |     |    |    |  |     |   |   |     |    |    |     |    |    |     |    |    |     |    |    |  |     |   |   |     |    |    |     |    |    |     |    |    |
| MSE  | 10                   | 21                   |   |     |    |    |     |    |    |     |    |    |     |    |    |  |     |   |   |     |    |    |     |    |    |     |    |    |     |    |    |  |     |   |   |     |    |    |     |    |    |     |    |    |
| MSE  | 16                   | 30                   |   |     |    |    |     |    |    |     |    |    |     |    |    |  |     |   |   |     |    |    |     |    |    |     |    |    |     |    |    |  |     |   |   |     |    |    |     |    |    |     |    |    |
| MSE  | 20                   | 30                   |   |     |    |    |     |    |    |     |    |    |     |    |    |  |     |   |   |     |    |    |     |    |    |     |    |    |     |    |    |  |     |   |   |     |    |    |     |    |    |     |    |    |
| MSE  | 26                   | 30                   |   |     |    |    |     |    |    |     |    |    |     |    |    |  |     |   |   |     |    |    |     |    |    |     |    |    |     |    |    |  |     |   |   |     |    |    |     |    |    |     |    |    |
| BIN  | W                    | L                    |   |     |    |    |     |    |    |     |    |    |     |    |    |  |     |   |   |     |    |    |     |    |    |     |    |    |     |    |    |  |     |   |   |     |    |    |     |    |    |     |    |    |
| MSX  | 16                   | 30                   |   |     |    |    |     |    |    |     |    |    |     |    |    |  |     |   |   |     |    |    |     |    |    |     |    |    |     |    |    |  |     |   |   |     |    |    |     |    |    |     |    |    |
| MSX  | 20                   | 30                   |   |     |    |    |     |    |    |     |    |    |     |    |    |  |     |   |   |     |    |    |     |    |    |     |    |    |     |    |    |  |     |   |   |     |    |    |     |    |    |     |    |    |
| MSX  | 26                   | 30                   |   |     |    |    |     |    |    |     |    |    |     |    |    |  |     |   |   |     |    |    |     |    |    |     |    |    |     |    |    |  |     |   |   |     |    |    |     |    |    |     |    |    |

# Western Skyline

WSL

From page 18

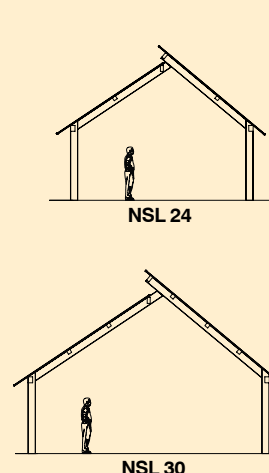
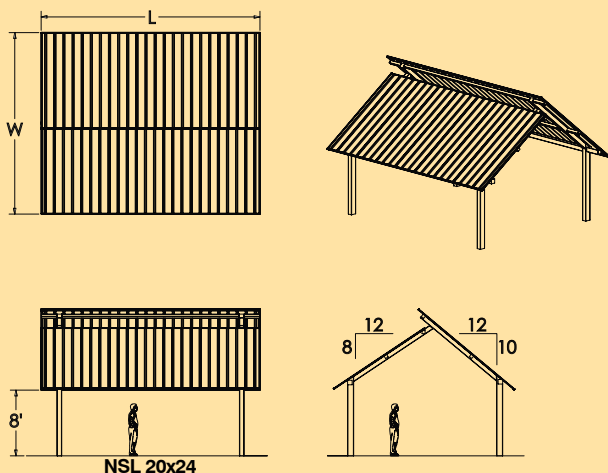


| Standard Sizes |    |    |
|----------------|----|----|
| BIN            | W  | L  |
| WSL            | 14 | 14 |
| WSL            | 20 | 20 |
| WSL            | 28 | 28 |

# Northern Skyline

NSL

NEW ITEM



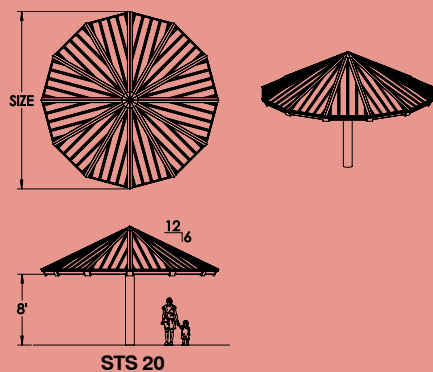
| Standard Sizes |    |    |              |
|----------------|----|----|--------------|
| BIN            | W  | L  | # of Columns |
| NSL            | 20 | 24 | 4            |
| NSL            | 24 | 34 | 4            |
| NSL            | 30 | 34 | 4            |
| NSL            | 30 | 50 | 6            |



# Single Tree

STS

From page 19



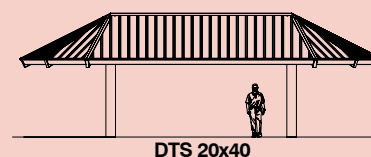
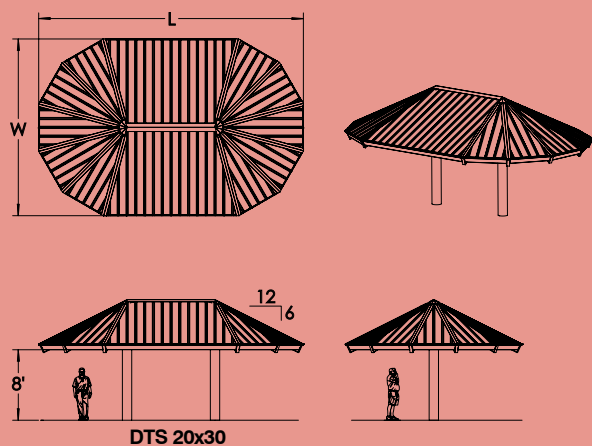
Standard Sizes

| BIN | Size |
|-----|------|
| STS | 20   |
| STS | 30   |

# Double Tree

DTS

From page 19



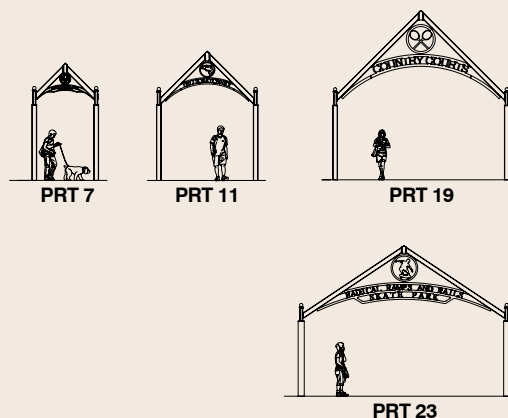
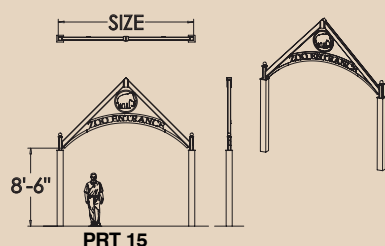
Standard Sizes

| BIN | W  | L  |
|-----|----|----|
| DTS | 20 | 30 |
| DTS | 20 | 40 |

# Portal

PRT

From page 20



Standard Sizes

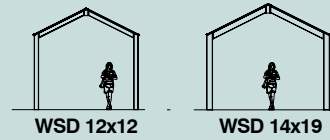
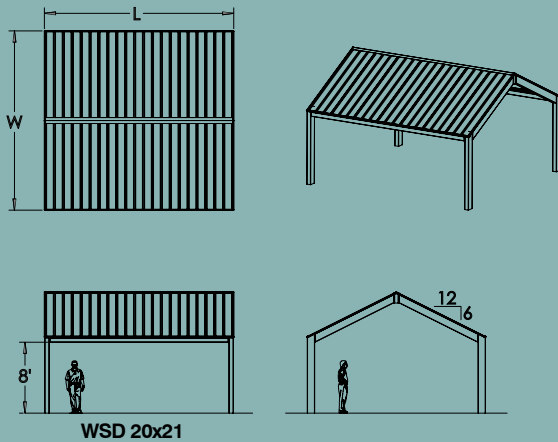
| BIN | Size | Pitch |
|-----|------|-------|
| PRT | 7    | 12:12 |
| PRT | 11   | 12:12 |
| PRT | 15   | 12:12 |
| PRT | 19   | 12:12 |
| PRT | 23   | 10:12 |



# Wayside

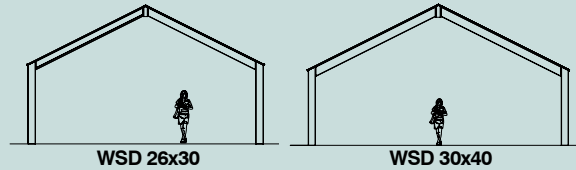
WSD

From page 21



Standard Sizes

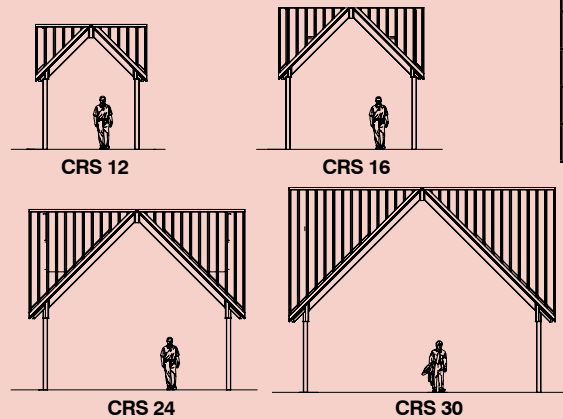
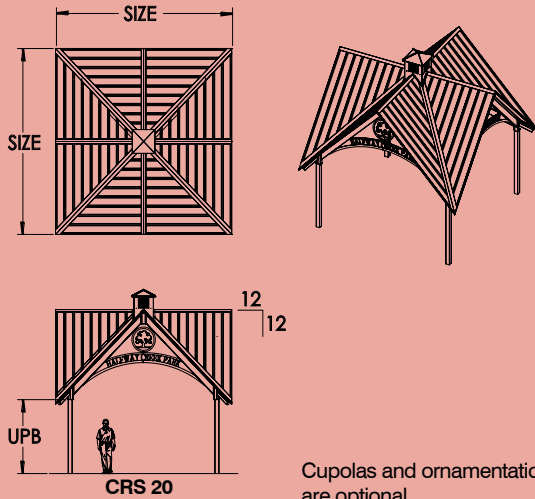
| BIN | W  | L  |
|-----|----|----|
| WSD | 12 | 12 |
| WSD | 14 | 19 |
| WSD | 20 | 21 |
| WSD | 26 | 30 |
| WSD | 30 | 40 |



# Crossing

CRS

From page 22



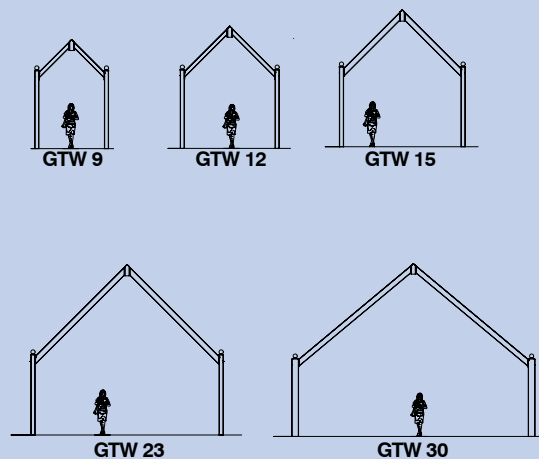
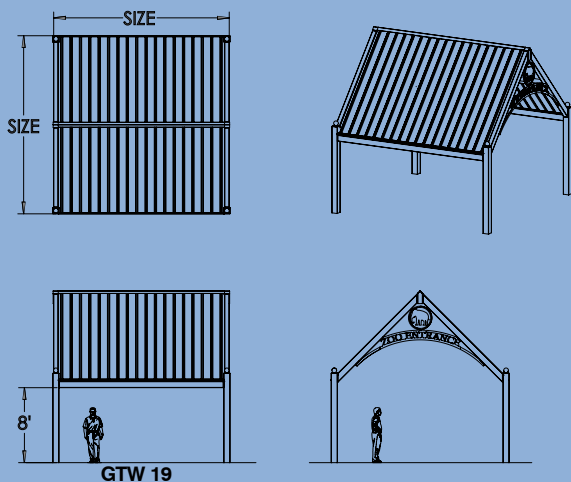
Standard Sizes

| BIN | Size | UPB   |
|-----|------|-------|
| CRS | 12   | 7'-6" |
| CRS | 16   | 7'-6" |
| CRS | 20   | 8'    |
| CRS | 24   | 8'    |
| CRS | 30   | 8'    |

# Gateway

GTW

From page 23



Standard Sizes

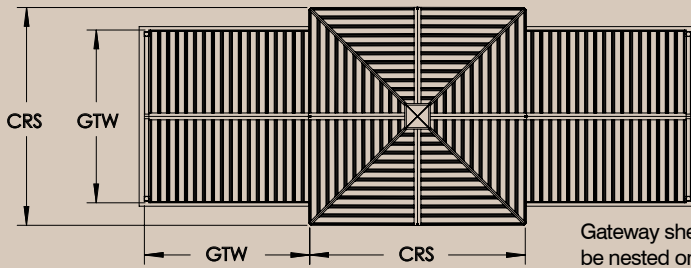
| BIN | Size | Pitch |
|-----|------|-------|
| GTW | 9    | 12:12 |
| GTW | 12   | 12:12 |
| GTW | 15   | 12:12 |
| GTW | 19   | 12:12 |
| GTW | 23   | 12:12 |
| GTW | 30   | 10:12 |



# Nested Crossing/Gateway

CGN

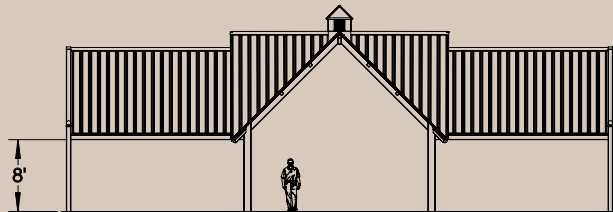
From page 23



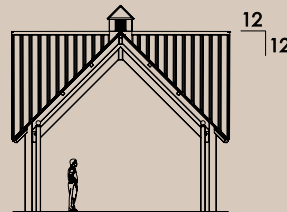
Gateway shelters may also be nested on any or all sides of a Crossing



Shelter shown with optional cupola



CGN 24-19



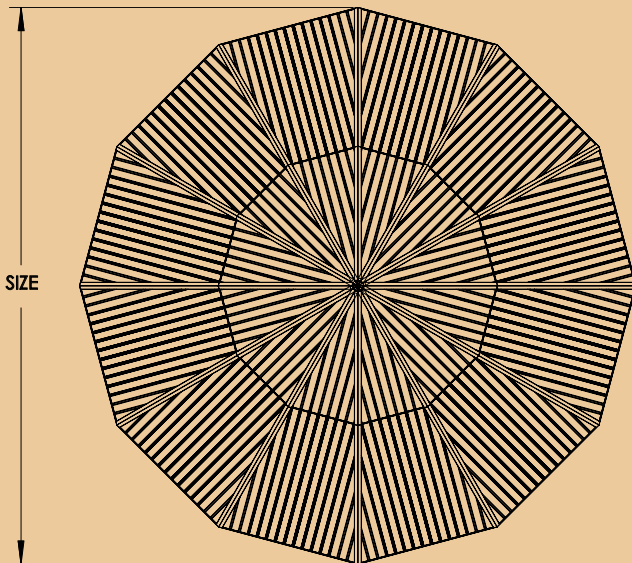
## Standard Sizes

| BIN | CRS | GTW |
|-----|-----|-----|
| CGN | 12  | 9   |
| CGN | 16  | 12  |
| CGN | 20  | 15  |
| CGN | 24  | 19  |
| CGN | 30  | 23  |

# Clerestory Pavilion

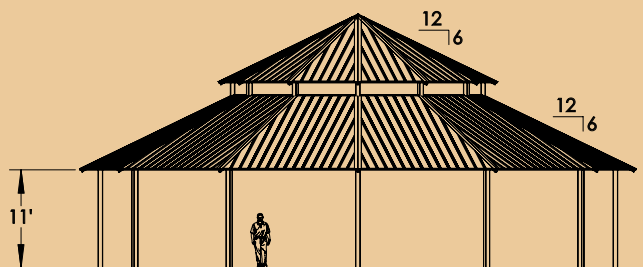
PLC

From page 24

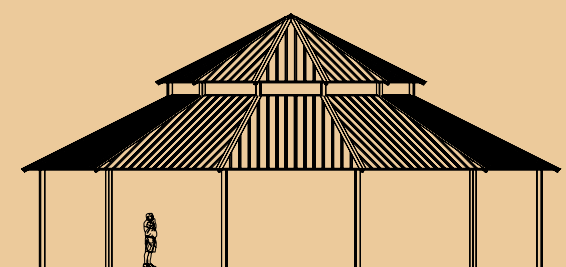


## Standard Sizes

| BIN | Size |
|-----|------|
| PLC | 50   |
| PLC | 60   |
| PLC | 66   |
| PLC | 72   |
| PLC | 86   |



PLC 60



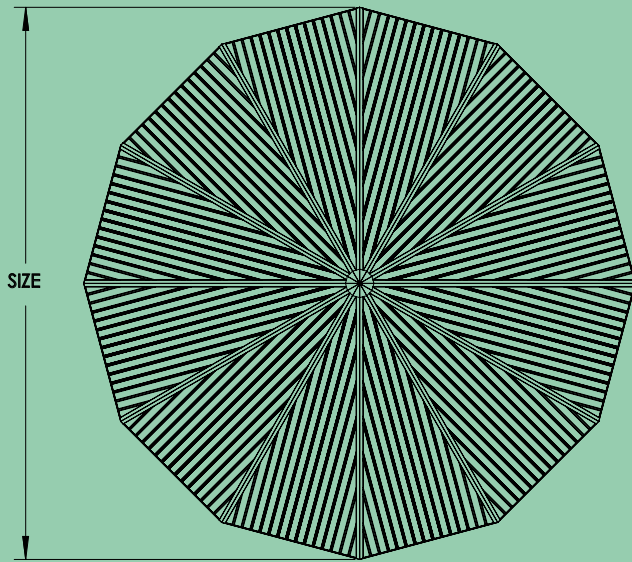
(Additional line drawings next page)



# Pavilion

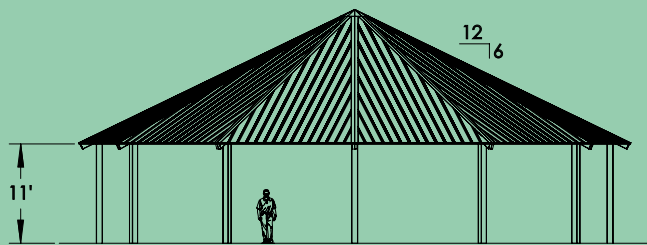
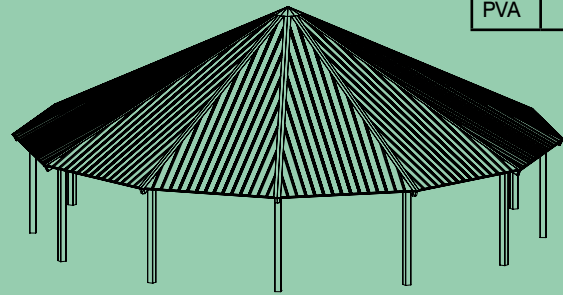
PVA

From page 24

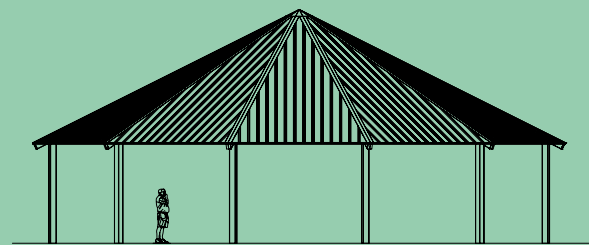


## Standard Sizes

| BIN | Size |
|-----|------|
| PVA | 40   |
| PVA | 50   |
| PVA | 60   |
| PVA | 66   |
| PVA | 72   |
| PVA | 86   |



PVA 60

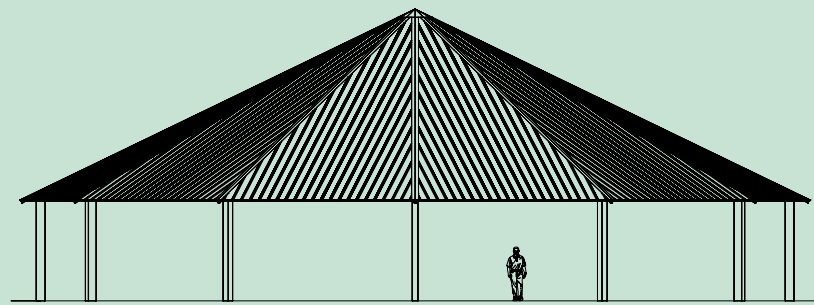


# Clerestory Pavilion (PLC) & Pavilion

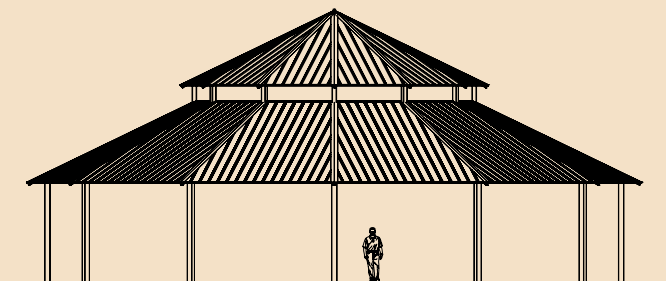
From page 24



PLC 50



PVA 86

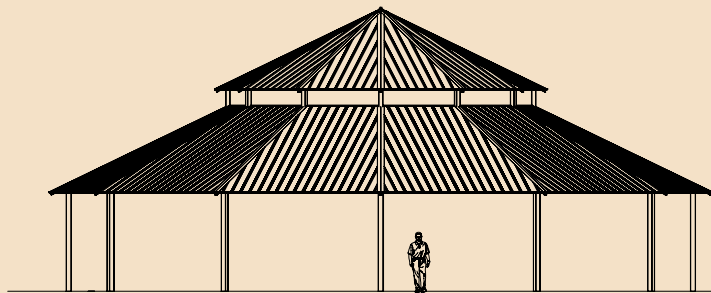


PLC 66

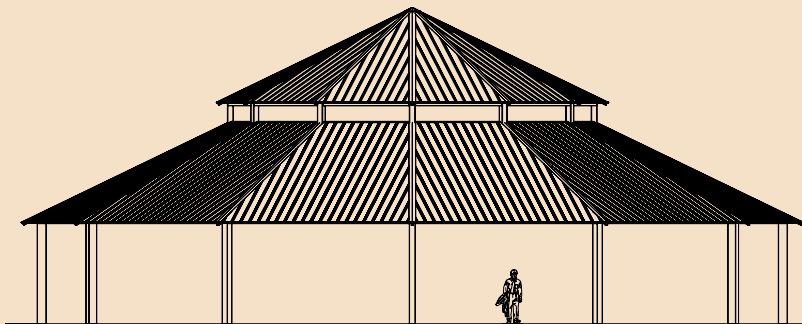


PVA 72

# Clerestory Pavilion (PLC) &



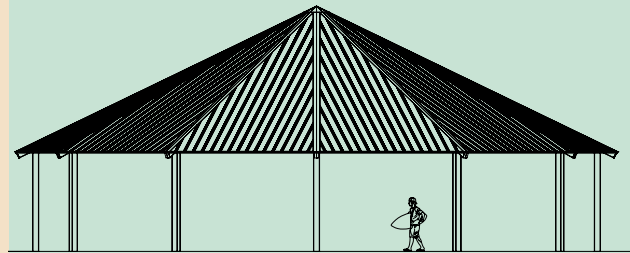
PLC 72



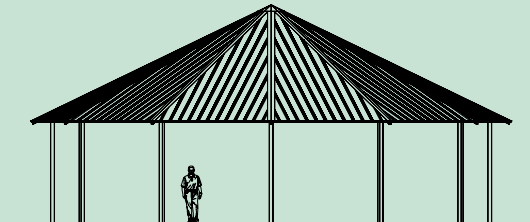
PLC 86

# Pavilion (PVA)

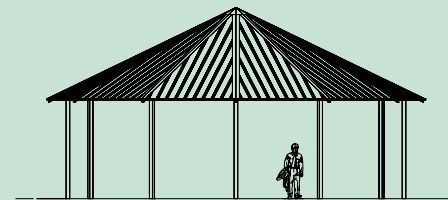
From page 24



PVA 66



PVA 50

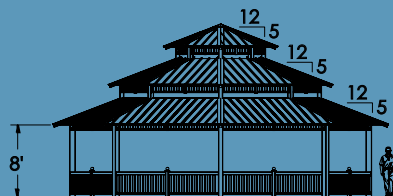
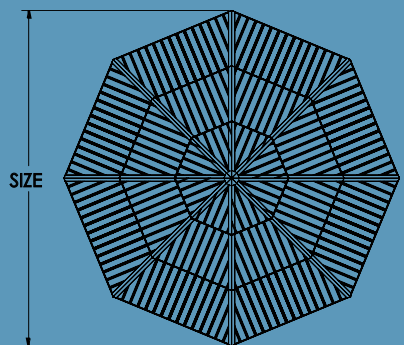


PVA 40

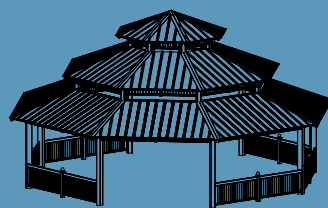
# Grand Carmel

GCO3

From pages 28 & 29

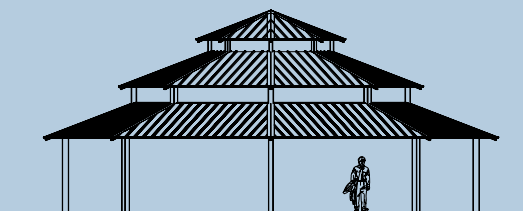


GCO3 40

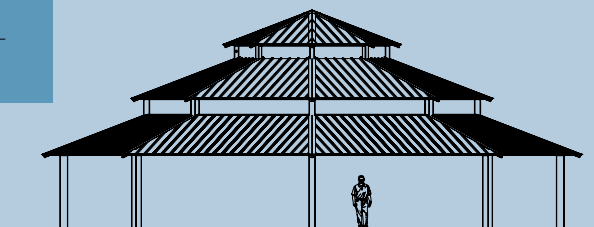


## Standard Sizes

| BIN  | Size |
|------|------|
| GCO3 | 40   |
| GCO3 | 48   |
| GCO3 | 58   |



GCO3 48



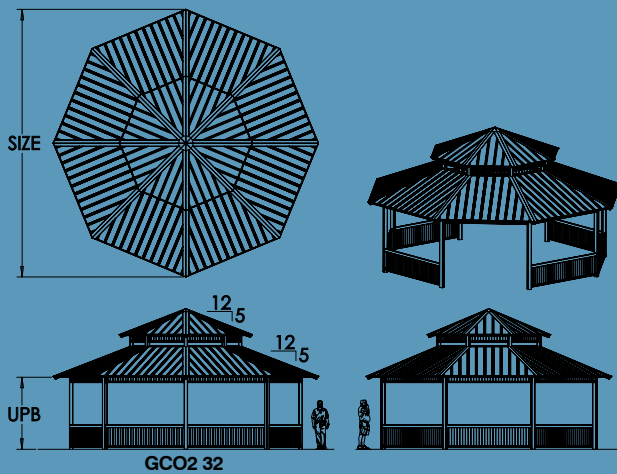
GCO3 58



# Carmel

GCO2

From pages 26 & 27



Standard Sizes

| BIN  | Size | UPB   |
|------|------|-------|
| GCO2 | 20   | 7'-6" |
| GCO2 | 24   | 8'    |
| GCO2 | 28   | 8'    |
| GCO2 | 32   | 8'    |



GCO2 20



GCO2 24

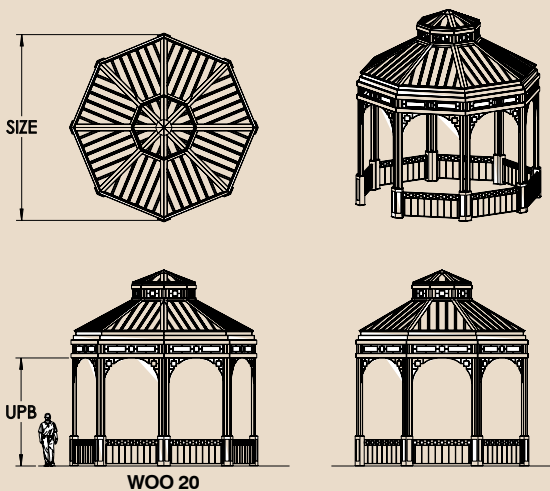


GCO2 28

# Wooster

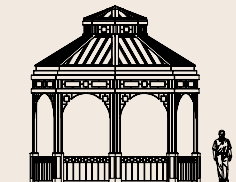
WOO

From page 30

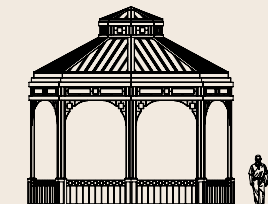


Standard Sizes

| BIN | Size | Lower Pitch | Upper Pitch | UPB |
|-----|------|-------------|-------------|-----|
| WOO | 18   | 8:12        | 5:12        | 10  |
| WOO | 20   | 7:12        | 5:12        | 12  |
| WOO | 22   | 7:12        | 5:12        | 12  |



WOO 18



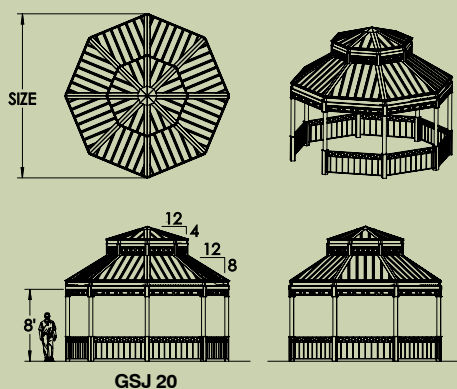
WOO 22

Wooster is available only with a SIP roof deck, and comes standard with Wooster style columns (see page 100). Railing and ornamentation are optional.

# San Jose

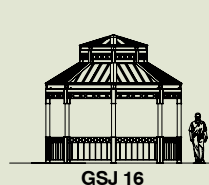
GSJ

From page 31

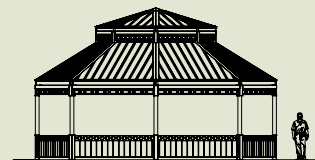


Standard Sizes

| BIN | SIZE |
|-----|------|
| GSJ | 16   |
| GSJ | 20   |
| GSJ | 30   |



GSJ 16



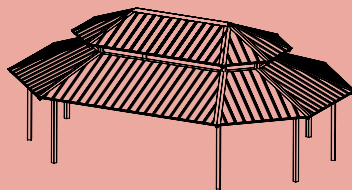
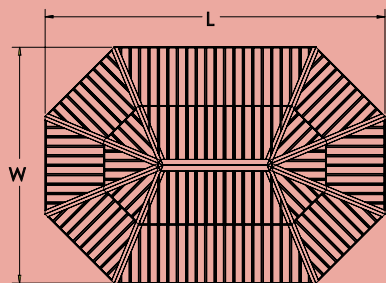
GSJ 30

San Jose is available only with a SIP roof deck, and comes standard with San Jose style columns (see page 100). Railing and ornamentation are optional.

# Mackinac

MAC

From page 31



MAC 25x36



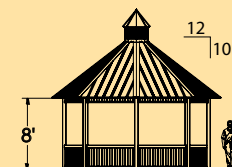
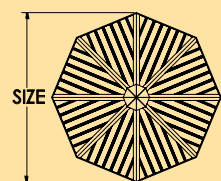
## Standard Sizes

| BIN | W  | L  |
|-----|----|----|
| MAC | 16 | 22 |
| MAC | 20 | 29 |
| MAC | 25 | 36 |
| MAC | 30 | 43 |

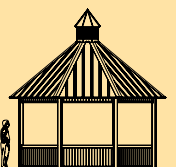
# Pembroke

PEM

NEW ITEM



PEM 20



Cupolas and ornamentation are optional.



PEM 16



PEM 24

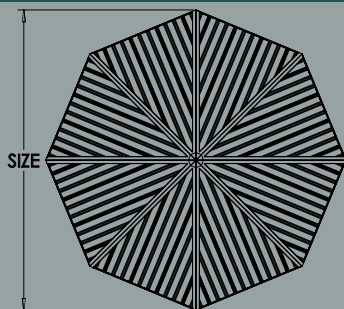
## Standard Sizes

| BIN | Size |
|-----|------|
| PEM | 16   |
| PEM | 20   |
| PEM | 24   |

# Octagon

OTC

From page 32



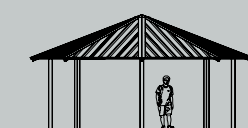
OTC 32



OTC 16



OTC 20



OTC 24

## Standard Sizes

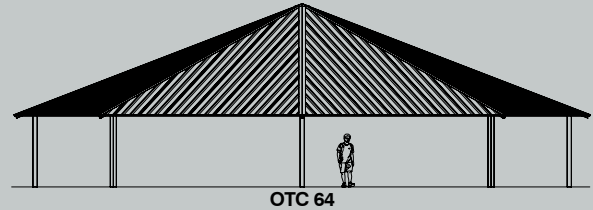
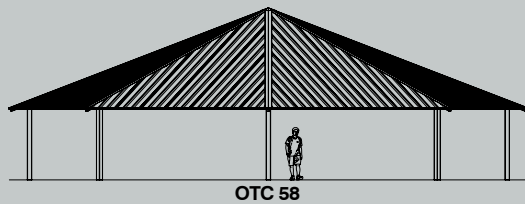
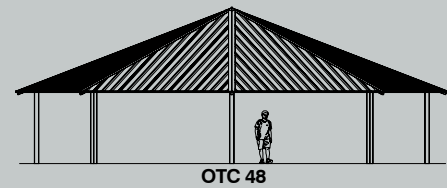
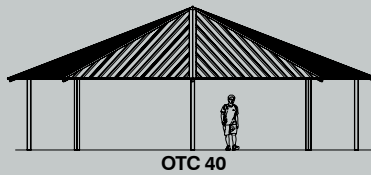
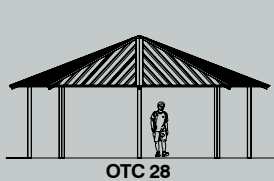
| BIN | Size | UPB   |
|-----|------|-------|
| OTC | 16   | 7'-6" |
| OTC | 20   | 7'-6" |
| OTC | 24   | 8'    |
| OTC | 28   | 8'    |
| OTC | 32   | 8'    |
| OTC | 40   | 8'    |
| OTC | 48   | 8'    |
| OTC | 58   | 8'    |
| OTC | 64   | 8'    |



# Octagon

OTC

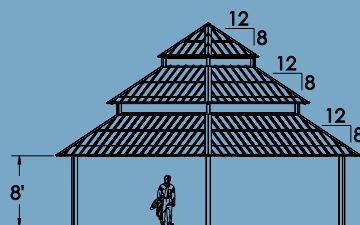
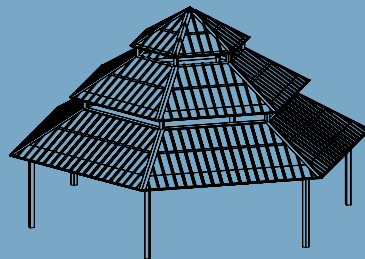
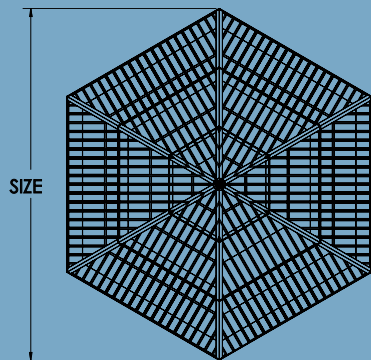
From page 32



# Grand Oxford

GXO3

NEW ITEM



GXO3 40



## Standard Sizes

| BIN  | Size |
|------|------|
| GXO3 | 40   |
| GXO3 | 48   |
| GXO3 | 58   |
| GXO3 | 64   |
| GXO3 | 76   |



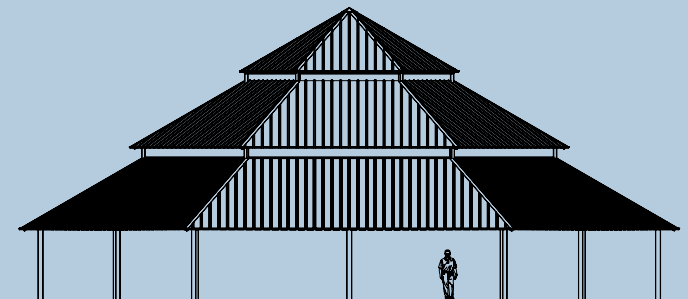
GXO3 48



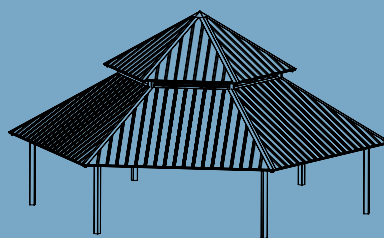
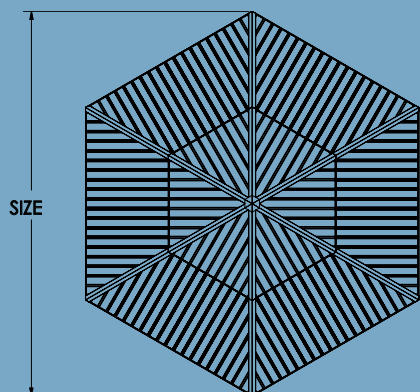
GXO3 58



GXO3 64



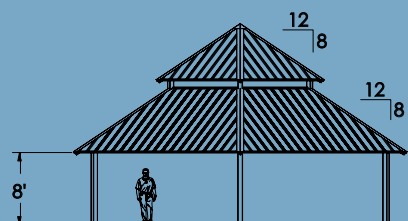
GXO3 76



GXO2 24

## Standard Sizes

| BIN  | SIZE |
|------|------|
| GXO2 | 24   |
| GXO2 | 28   |
| GXO2 | 32   |
| GXO2 | 40   |
| GXO2 | 48   |
| GXO2 | 58   |
| GXO2 | 64   |
| GXO2 | 76   |



GXO2 40



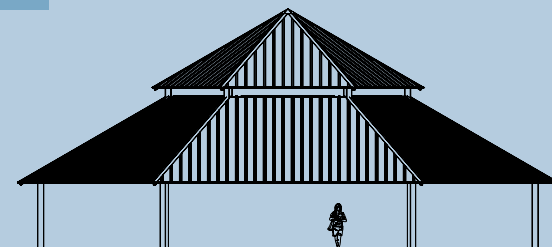
GXO2 28



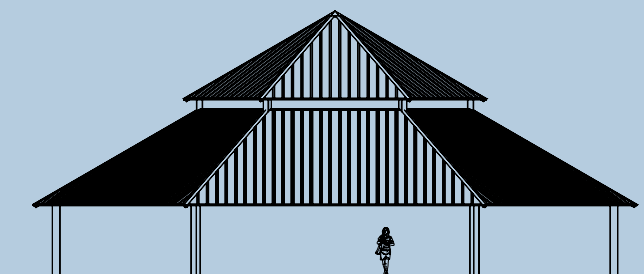
GXO2 32



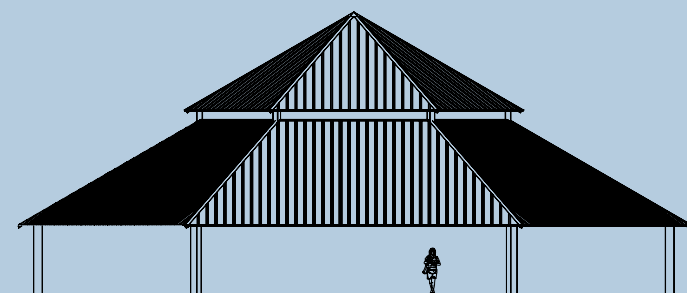
GXO2 48



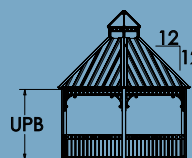
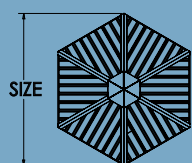
GXO2 58



GXO2 64



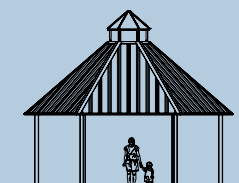
GXO2 76



GXO 18



GXO 14



GXO 22

## Standard Sizes

| BIN | Size | UPB   |
|-----|------|-------|
| GXO | 14   | 7'-6" |
| GXO | 18   | 7'-6" |
| GXO | 22   | 8'    |

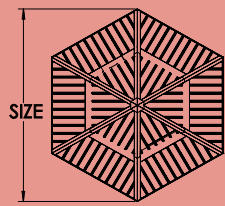
Functional cupola without ornamentation included in base price of GXO.



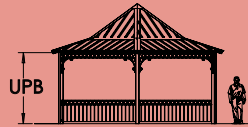
# Ironwood

GWI

From page 36



Ornamentation and railings are optional.



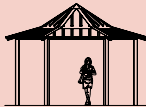
GWI 24

Standard Sizes

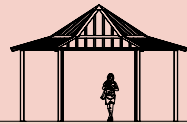
| BIN | Size | Lower Pitch | Upper Pitch | UPB   |
|-----|------|-------------|-------------|-------|
| GWI | 14   | 4:12        | 9:12        | 7'-6" |
| GWI | 16   | 4:12        | 9:12        | 7'-6" |
| GWI | 20   | 4:12        | 9:12        | 8'    |
| GWI | 24   | 4:12        | 9:12        | 8'    |
| GWI | 34   | 4:12        | 8:12        | 8'    |
| GWI | 42   | 4:12        | 8:12        | 8'    |
| GWI | 46   | 4:12        | 8:12        | 8'    |
| GWI | 60   | 4:12        | 8:12        | 8'    |



GWI 14



GWI 16



GWI 20



GWI 34



GWI 42



GWI 46

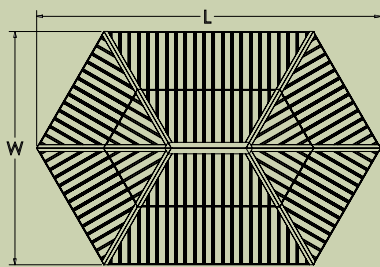


GWI 60

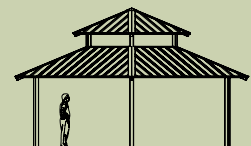
# Tiara

TIA

From page 37



TIA 25x37



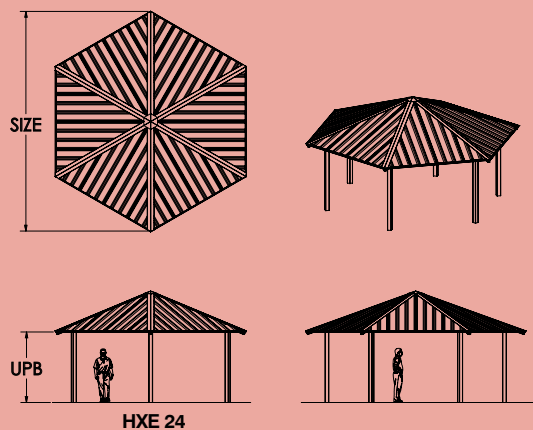
Standard Sizes

| BIN | W  | L  | # of Columns |
|-----|----|----|--------------|
| TIA | 15 | 24 | 6            |
| TIA | 20 | 29 | 6            |
| TIA | 25 | 37 | 6            |
| TIA | 30 | 44 | 6            |
| TIA | 35 | 51 | 6            |

# Hexagon

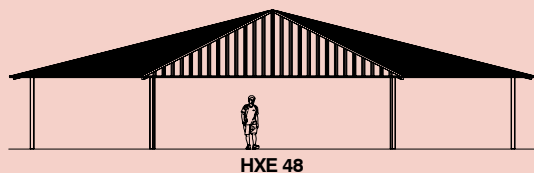
HXE

From page 38



Standard Sizes

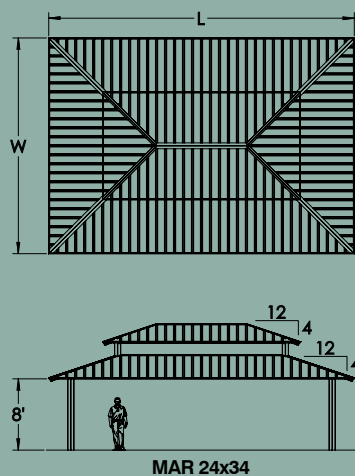
| BIN | Size | UPB  | Pitch  |
|-----|------|------|--------|
| HXE | 16   | 7'6" | 5:12   |
| HXE | 20   | 8'   | 5:12   |
| HXE | 24   | 8'   | 5:12   |
| HXE | 28   | 8'   | 5:12   |
| HXE | 32   | 8'   | 3.5:12 |
| HXE | 40   | 8'   | 3.5:12 |
| HXE | 48   | 8'   | 3.5:12 |
| HXE | 58   | 8'   | 3.5:12 |
| HXE | 64   | 8'   | 3.5:12 |



# Marquee

MAR

From page 40



Marquee can also be manufactured in multiple bays.

Standard Sizes

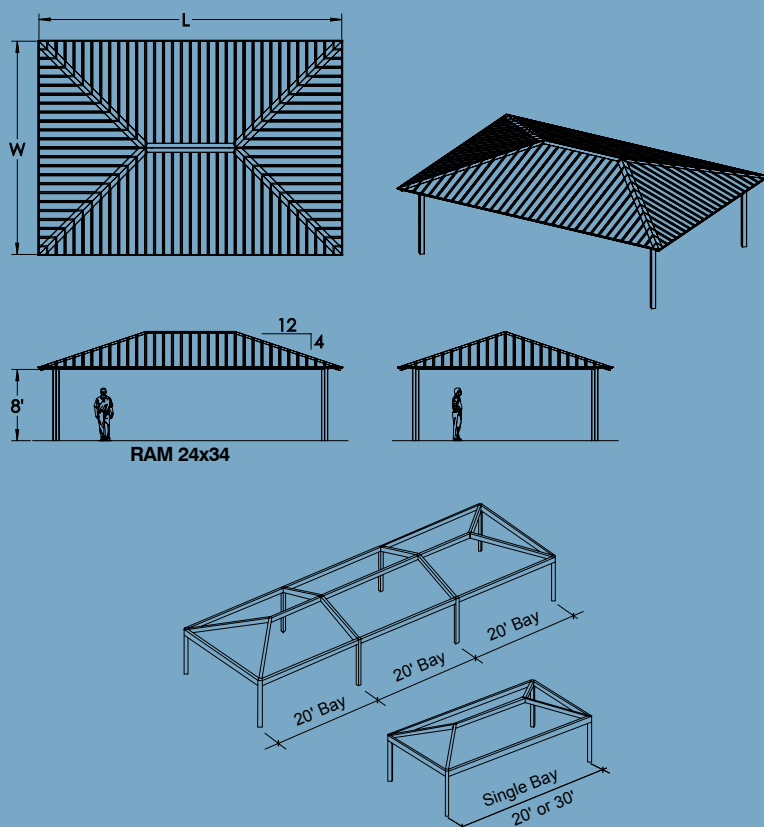
| BIN | W  | L  | # of Columns |
|-----|----|----|--------------|
| MAR | 14 | 24 | 4            |
| MAR | 20 | 24 | 4            |
| MAR | 24 | 34 | 4            |
| MAR | 30 | 34 | 4            |
| MAR | 40 | 44 | 8            |



# Hip Roof

RAM

From pages 42 & 43



Hip Roof Shelters are available with a single 30' bay or expandable in unlimited 20' bays, including the suggested standard lengths listed in the tables.

Standard Sizes

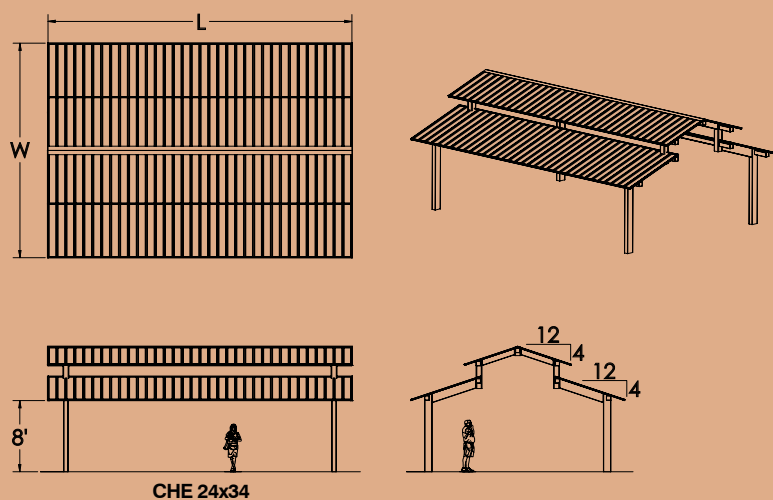
| BIN | W  | L   | Bay Size |
|-----|----|-----|----------|
| RAM | 12 | 18  | 16       |
| RAM | 12 | 22  | 20       |
| RAM | 12 | 32  | 30       |
| RAM | 12 | 42  | 20       |
| RAM | 16 | 24  | 20       |
| RAM | 16 | 34  | 30       |
| RAM | 16 | 44  | 20       |
| RAM | 16 | 64  | 20       |
| RAM | 20 | 24  | 20       |
| RAM | 20 | 34  | 30       |
| RAM | 20 | 44  | 20       |
| RAM | 20 | 64  | 20       |
| RAM | 24 | 34  | 30       |
| RAM | 24 | 44  | 20       |
| RAM | 24 | 64  | 20       |
| RAM | 24 | 84  | 20       |
| RAM | 24 | 104 | 20       |
| RAM | 30 | 34  | 30       |
| RAM | 30 | 44  | 20       |
| RAM | 30 | 64  | 20       |
| RAM | 30 | 84  | 20       |
| RAM | 30 | 104 | 20       |

| BIN | W  | L   | Bay Size |
|-----|----|-----|----------|
| RAM | 40 | 44  | 20       |
| RAM | 40 | 64  | 20       |
| RAM | 40 | 84  | 20       |
| RAM | 40 | 104 | 20       |
| RAM | 50 | 64  | 14       |
| RAM | 50 | 70  | 20       |
| RAM | 50 | 90  | 20       |
| RAM | 50 | 110 | 20       |

# Chelsea

CHE

From pages 41



Standard Sizes

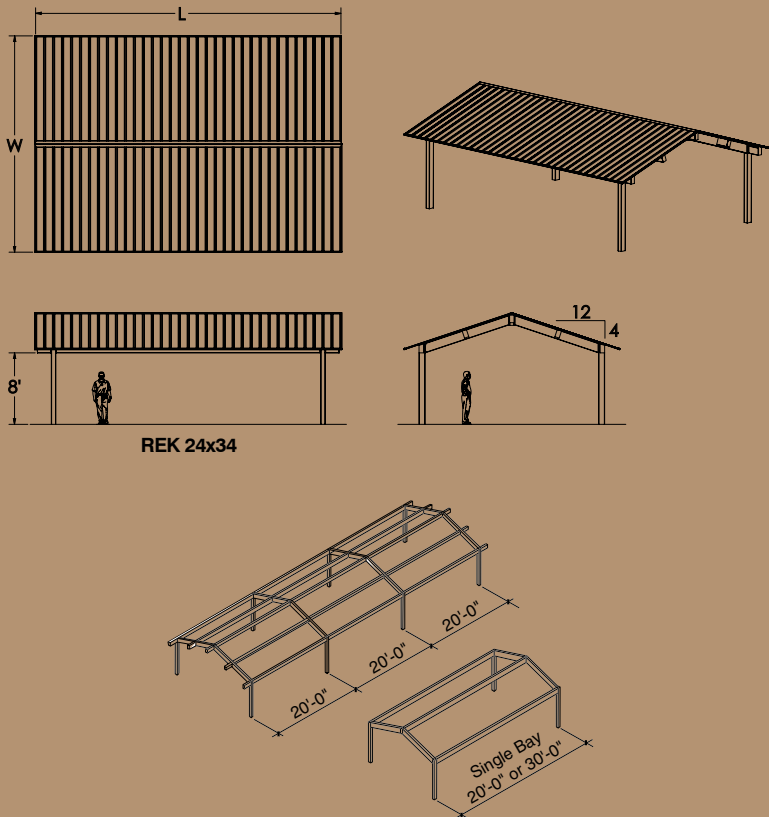
| BIN | W  | L  | # of Columns |
|-----|----|----|--------------|
| CHE | 16 | 24 | 4            |
| CHE | 16 | 34 | 4            |
| CHE | 20 | 24 | 4            |
| CHE | 20 | 34 | 4            |
| CHE | 24 | 34 | 4            |
| CHE | 24 | 44 | 6            |
| CHE | 24 | 64 | 8            |
| CHE | 30 | 34 | 6            |
| CHE | 30 | 44 | 6            |

Chelsea can also be manufactured in multiple bays.

# Gable Roof

REK

From pages 44 & 45



REK 24x34

Gable Roof Shelters are available with a single 30' bay or expandable in unlimited 20' bays, including the suggested standard lengths listed in the tables.

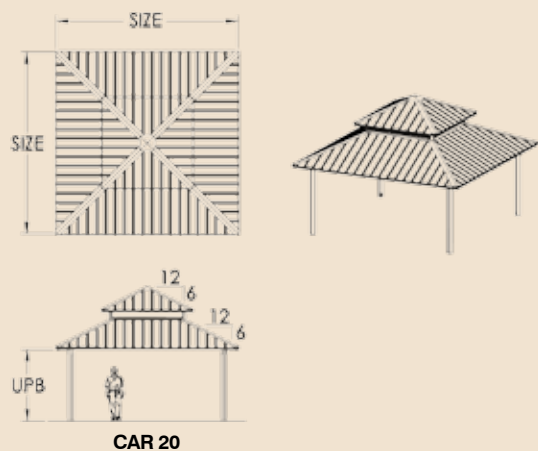
Standard Sizes

| BIN | W  | L   | Bay Size |
|-----|----|-----|----------|
| REK | 16 | 24  | 20       |
| REK | 16 | 34  | 30       |
| REK | 16 | 44  | 20       |
| REK | 20 | 24  | 20       |
| REK | 20 | 34  | 30       |
| REK | 20 | 44  | 20       |
| REK | 24 | 24  | 20       |
| REK | 24 | 34  | 30       |
| REK | 24 | 44  | 20       |
| REK | 24 | 64  | 20       |
| REK | 24 | 84  | 20       |
| REK | 30 | 34  | 30       |
| REK | 30 | 44  | 20       |
| REK | 30 | 64  | 20       |
| REK | 30 | 84  | 20       |
| REK | 30 | 104 | 20       |
| REK | 40 | 44  | 20       |
| REK | 40 | 64  | 20       |
| REK | 40 | 84  | 20       |
| REK | 40 | 104 | 20       |
| REK | 50 | 64  | 20       |
| REK | 50 | 84  | 20       |
| REK | 50 | 104 | 20       |

# Carnival (Clerestory Square)

CAR

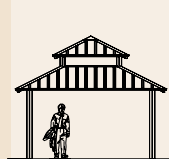
From page 46



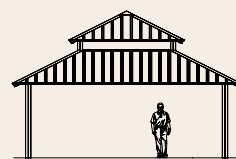
CAR 20

Standard Sizes

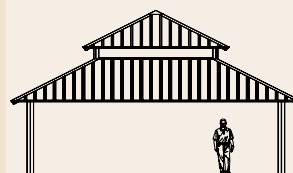
| BIN | Size | UPB   | Columns |
|-----|------|-------|---------|
| CAR | 16   | 7'-6" | 4       |
| CAR | 20   | 8'    | 4       |
| CAR | 24   | 8'    | 4       |
| CAR | 30   | 8'    | 4       |
| CAR | 40   | 8'    | 8       |



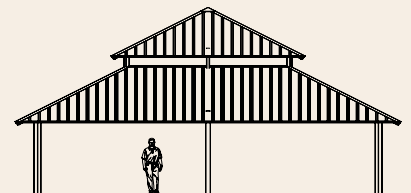
CAR 16



CAR 24



CAR 30



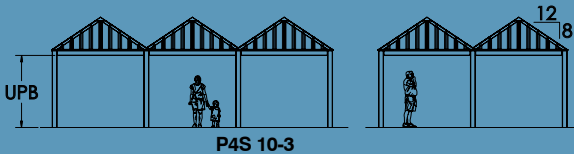
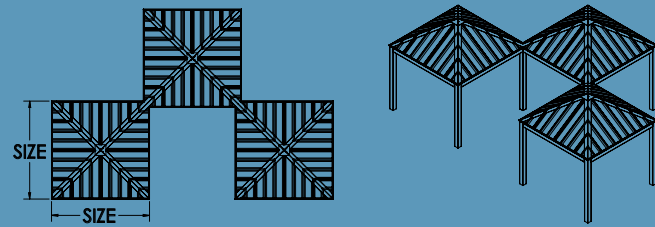
CAR 40



# Multi-Squares

P4S

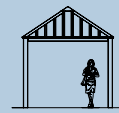
From page 47



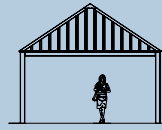
P4S 10-3

## Standard Sizes

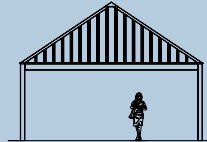
| BIN | Size | UPB   |
|-----|------|-------|
| P4S | 10   | 7'-6" |
| P4S | 15   | 7'-6" |
| P4S | 20   | 8'    |
| P4S | 30   | 8'    |



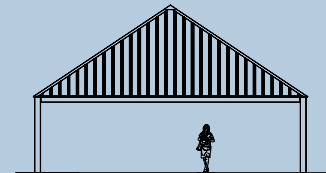
P4S 10



P4S 15



P4S 20

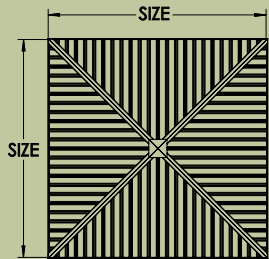


P4S 30

# Square

SQR

From pages 48 & 49



SQR 24

## Standard Sizes

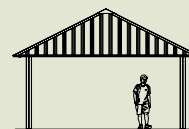
| BIN | Size | UPB   | # of Columns |
|-----|------|-------|--------------|
| SQR | 12   | 7'-6" | 4            |
| SQR | 16   | 7'-6" | 4            |
| SQR | 20   | 8'    | 4            |
| SQR | 24   | 8'    | 4            |
| SQR | 30   | 8'    | 4            |
| SQR | 36   | 8'    | 4            |
| SQR | 40   | 8'    | 8            |
| SQR | 50   | 8'    | 8            |



SQR 12



SQR 16



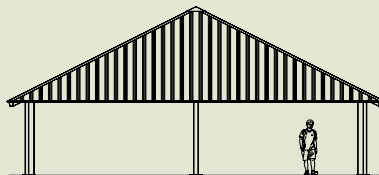
SQR 20



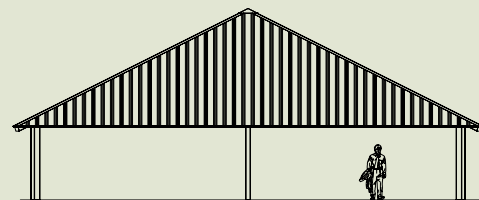
SQR 30



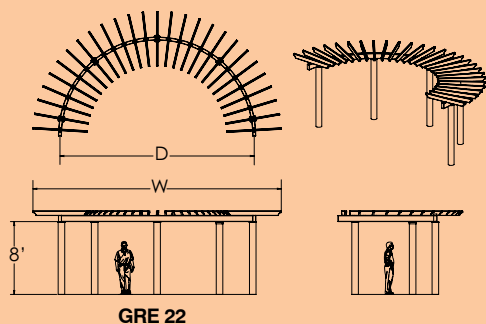
SQR 36



SQR 40



SQR 50



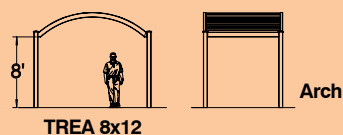
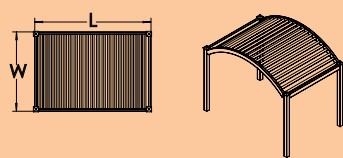
Standard Sizes

| BIN | W  | D  | Arc | COL |
|-----|----|----|-----|-----|
| GRE | 22 | 16 | 180 | 4   |
| GRE | 26 | 20 | 180 | 5   |
| GRE | 30 | 24 | 180 | 6   |

## Basic Trellises

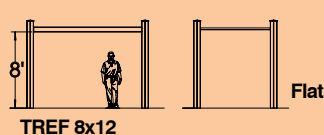
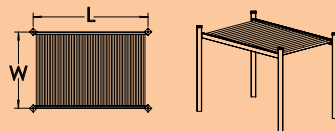
TREF, TREG, TREA

From page 51



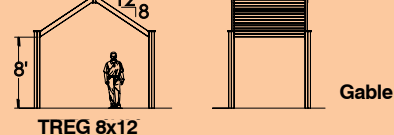
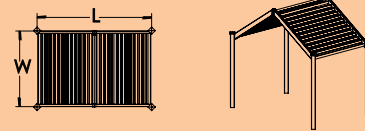
Standard Sizes

| BIN  | W | L  |
|------|---|----|
| TREA | 8 | 8  |
| TREA | 8 | 10 |
| TREA | 8 | 12 |



Standard Sizes

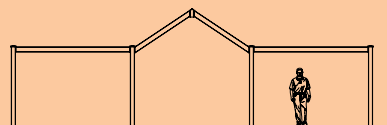
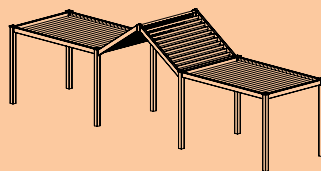
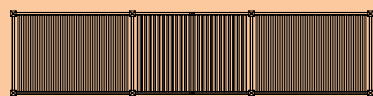
| BIN  | W | L  |
|------|---|----|
| TREF | 8 | 8  |
| TREF | 8 | 10 |
| TREF | 8 | 12 |



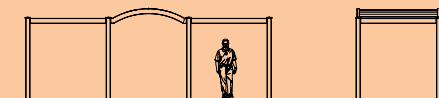
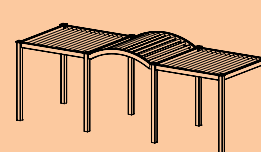
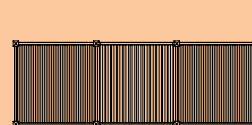
Standard Sizes

| BIN  | W | L  |
|------|---|----|
| TREG | 8 | 8  |
| TREG | 8 | 10 |
| TREG | 8 | 12 |

Basic Trellises are available in custom configurations.



12' Bay Flat-Gable-Flat Configuration



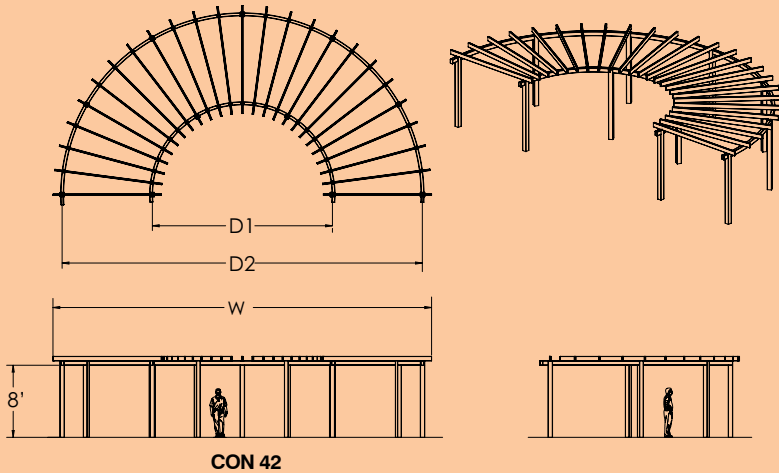
8' Bay Flat-Arch-Flat Configuration



# Concord

CON

From page 50



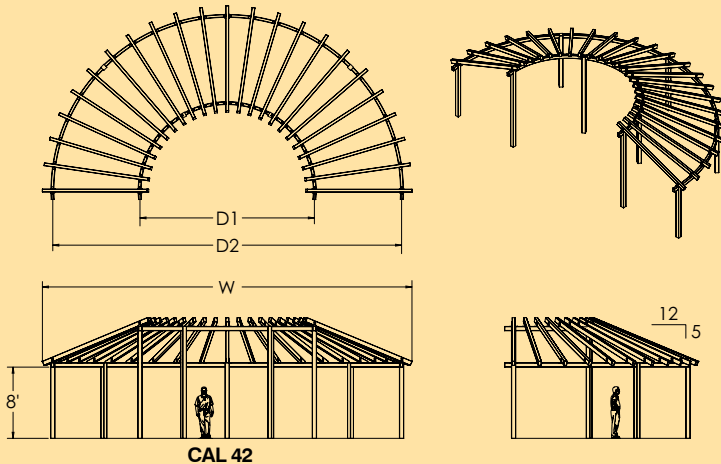
Standard Sizes

| BIN | W  | D1 | D2 | Arc | D1 # of Columns | D2 # of Columns |
|-----|----|----|----|-----|-----------------|-----------------|
| CON | 22 | 12 | 20 | 180 | 4               | 4               |
| CON | 32 | 15 | 30 | 180 | 4               | 6               |
| CON | 42 | 20 | 40 | 180 | 4               | 7               |
| CON | 52 | 25 | 50 | 180 | 5               | 8               |

# Calmeria

CAL

NEW ITEM



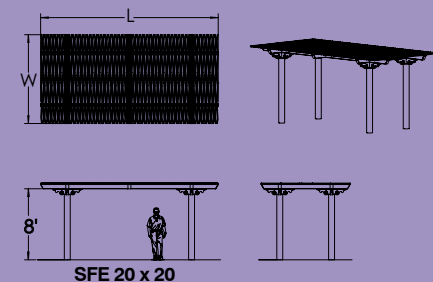
Standard Sizes

| BIN | W  | D1   | D2 | Arc | D1 # of Columns | D2 # of Columns |
|-----|----|------|----|-----|-----------------|-----------------|
| CAL | 32 | 12.5 | 30 | 180 | 3               | 5               |
| CAL | 42 | 20   | 40 | 180 | 4               | 5               |
| CAL | 52 | 30   | 50 | 180 | 5               | 6               |

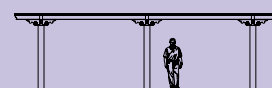
# Santa Fe

SFE

From page 52

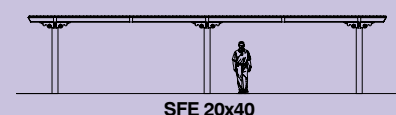
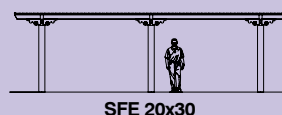
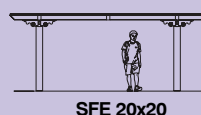
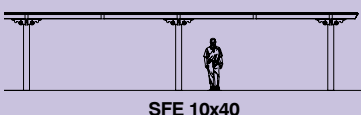


Santa Fe comes standard with Albuquerque ornamentation (left).



Standard Sizes

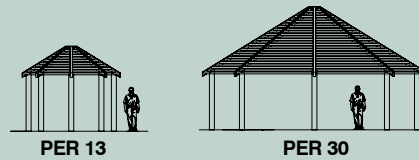
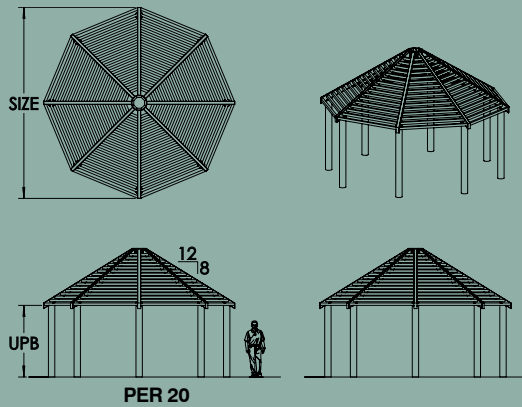
| BIN | W  | L  | UPB   | # of Columns |
|-----|----|----|-------|--------------|
| SFE | 10 | 10 | 7'-6" | 4            |
| SFE | 10 | 20 | 8'    | 4            |
| SFE | 10 | 30 | 8'    | 6            |
| SFE | 10 | 40 | 8'    | 6            |
| SFE | 20 | 20 | 8'    | 4            |
| SFE | 20 | 30 | 8'    | 6            |
| SFE | 20 | 40 | 8'    | 6            |



# Pergola

PER

From page 52



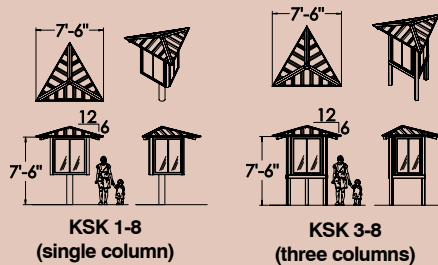
Standard Sizes

| BIN | Size | UPB  |
|-----|------|------|
| PER | 13   | 7'6" |
| PER | 20   | 8'   |
| PER | 30   | 8'   |

# Kiosk

KSK

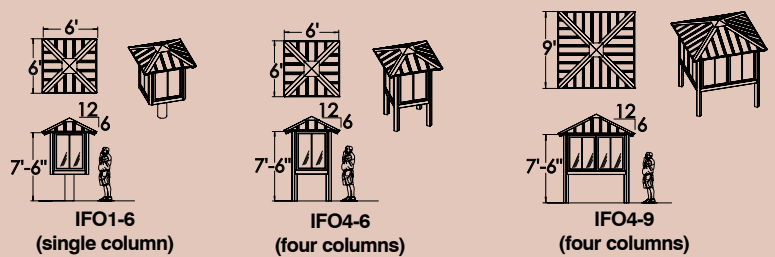
From page 53



# Info. Stations

IFO

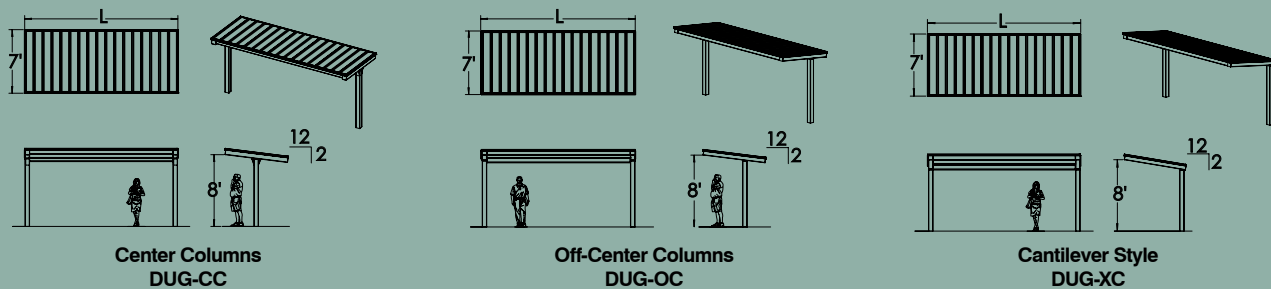
From page 53



# Dugouts

DUG

From page 53



Standard Sizes

| BIN   | L  |
|-------|----|
| DUGCC | 12 |
| DUGCC | 16 |
| DUGCC | 20 |

Standard Sizes

| BIN   | L  |
|-------|----|
| DUGOC | 12 |
| DUGOC | 16 |
| DUGOC | 20 |

Standard Sizes

| BIN   | L  |
|-------|----|
| DUGXC | 12 |
| DUGXC | 16 |
| DUGXC | 20 |

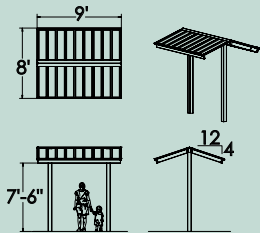
Dugout bays are measured from column-to-column.



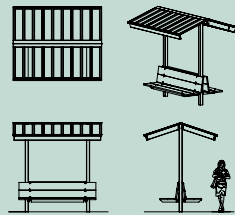
# Gable Roof Sunshelters

SSG

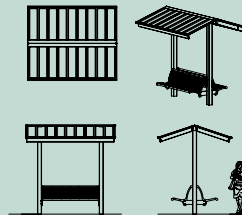
From pages 54 & 55



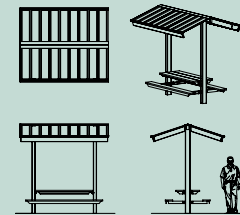
Open Sunshelter  
SSG 8x9



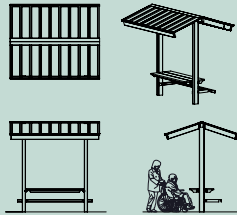
SSG 8x9 w/Dual Plastic  
Lumber Seating  
(Sundry item S53)



SSG 8x9 w/Dual  
Metal Slat Seating  
(Sundry item S60)



SSG 8x9 w/Plastic Lumber  
Picnic Table and Seating  
(Sundry item S57)



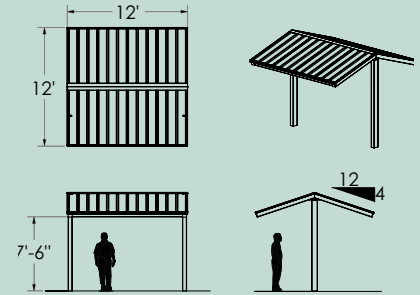
SSG 8x9 w/ADA Compliant  
Plastic Lumber Table & Seating  
(Sundry item S49)



SSG 8x9 w/Double  
Display Case  
(Sundry item S41)



SSG 8x9 w/Display Board  
(Sundry item S42)

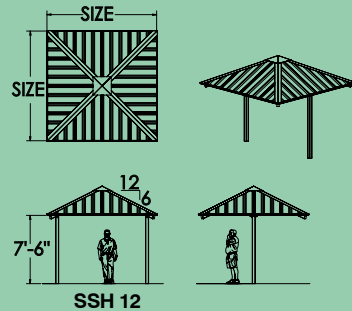


Open Sunshelter  
SSG 12x12

# Hip Roof Sunshelters

SSH

From page 54 & 55



SSH 12



SSH 10

Standard Sizes

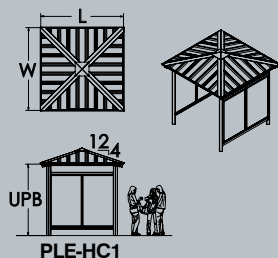
| BIN | Size |
|-----|------|
| SSH | 10   |
| SSH | 12   |

Hip Roof Sunshelters are available with the same Sundries as Gable Roof Sunshelters above, and are always square.

# Portable Lavatory Enclosures

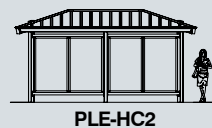
PLE, PLX

From page 56

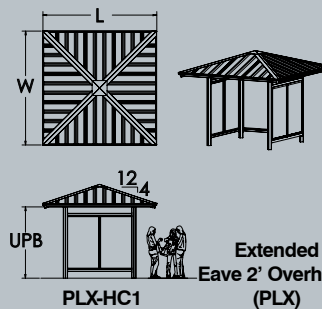


PLE-HC1  
Standard  
Eave Overhang (PLE)

| Standard Sizes |    |    |       |
|----------------|----|----|-------|
| BIN            | W  | L  | UPB   |
| PLE-HC1        | 9  | 9  | 7'-6" |
| PLE-HC2        | 10 | 18 | 8'    |



PLE-HC2



PLX-HC1

Extended  
Eave 2' Overhang  
(PLX)

| Standard Sizes |    |    |       |
|----------------|----|----|-------|
| BIN            | W  | L  | UPB   |
| PLX-HC1        | 12 | 12 | 7'-6" |
| PLX-HC2        | 13 | 20 | 8'    |



PLX-HC2

# Transit Shelters

ARC, ARC2, MSL,

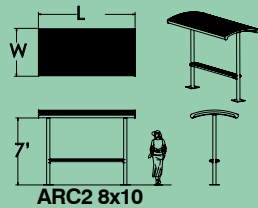
NEW ITEM



ARC 8x24

## Standard Sizes

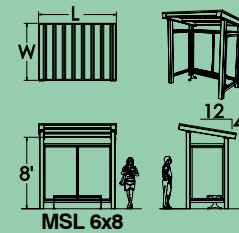
| BIN | W | L  |
|-----|---|----|
| ARC | 8 | 8  |
| ARC | 8 | 16 |
| ARC | 8 | 24 |



ARC2 8x10

## Standard Sizes

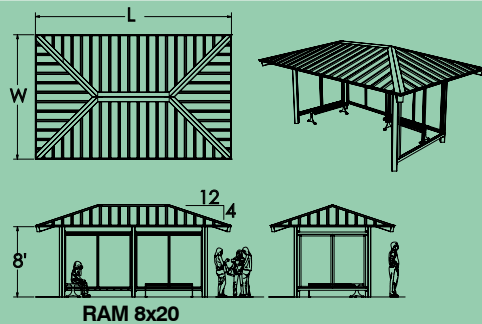
| BIN  | W | L  |
|------|---|----|
| ARC2 | 5 | 10 |
| ARC2 | 8 | 10 |



MSL 6x8

## Standard Sizes

| BIN | W | L  |
|-----|---|----|
| MSL | 6 | 8  |
| MSL | 6 | 16 |
| MSL | 6 | 24 |



RAM 8x20

## Standard Sizes

| BIN | W  | L  |
|-----|----|----|
| RAM | 8  | 20 |
| RAM | 8  | 28 |
| RAM | 12 | 20 |

Side panels and benches are optional.



REK 8x24

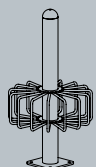
## Standard Sizes

| BIN | W | L  |
|-----|---|----|
| REK | 8 | 8  |
| REK | 8 | 16 |
| REK | 8 | 24 |

# Gripper™ Bike Rack

BPA, BPB, BPC

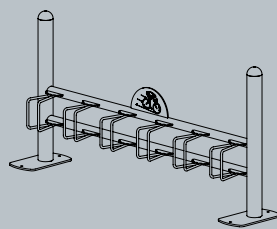
From page 60



Post Gripper  
(BPA)

## Standard Sizes

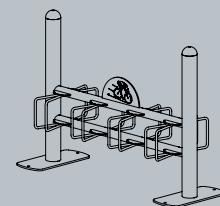
| BIN | # of Bikes | Spread |
|-----|------------|--------|
| BPA | 14         | 360°   |
| BPA | 8          | 180°   |
| BPA | 4          | 90°    |



Single-Sided Bar Gripper  
(BPB)

## Standard Sizes

| BIN | # of Bikes | Length | Depth w/Bikes |
|-----|------------|--------|---------------|
| BPB | 8          | 8.5    | 7             |
| BPB | 6          | 6.5    | 7             |
| BPB | 4          | 4.5    | 7             |



Double-Sided Bar Gripper  
(BPC)

## Standard Sizes

| BIN | # of Bikes | Length | Depth w/Bikes |
|-----|------------|--------|---------------|
| BPC | 16         | 8.5    | 12            |
| BPC | 12         | 6.5    | 12            |
| BPC | 8          | 4.5    | 12            |



# PICNIC TABLE CAPACITY

The matrixes below provide an approximate number of the picnic table capacity for each shelter. Totals were calculated using a standard picnic table size of 5'x6'. Numbers are approximate and informational only.

## Polygonal Shelters

|      | Hex. | Oct. | Dod. |
|------|------|------|------|
| Size |      |      |      |
| 16'  | 2    | 1    |      |
| 20'  | 4    | 4    |      |
| 24'  | 5    | 4    |      |
| 28'  | 7    | 5    |      |
| 32'  | 8    | 8    |      |
| 40'  | 14   | 14   | 16   |
| 48'  | 22   | 22   |      |
| 50'  |      |      | 27   |
| 58'  | 34   | 36   |      |
| 60'  |      |      | 41   |
| 64'  | 42   | 47   |      |
| 66'  |      |      | 52   |
| 86'  |      |      | 79   |

## Hip Roof Shelters

|        | Width |     |     |     |     |     |     |
|--------|-------|-----|-----|-----|-----|-----|-----|
|        | 12'   | 16' | 20' | 24' | 30' | 40' | 50' |
| Length |       |     |     |     |     |     |     |
| 18'    | 2     |     |     |     |     |     |     |
| 22'    | 3     |     |     |     |     |     |     |
| 24'    |       | 6   | 7   |     |     |     |     |
| 34'    | 5     | 8   | 10  | 12  | 16  |     |     |
| 42'    | 6     |     |     |     |     |     |     |
| 44'    |       | 12  | 14  | 18  | 20  | 30  |     |
| 64'    |       | 16  | 22  | 25  | 32  | 42  | 56  |
| 84'    |       |     | 28  | 37  | 40  | 55  |     |
| 104'   |       |     |     | 48  | 52  | 79  |     |
| 70'    |       |     |     |     |     |     | 64  |
| 90'    |       |     |     |     |     |     | 81  |
| 110'   |       |     |     |     |     |     | 96  |

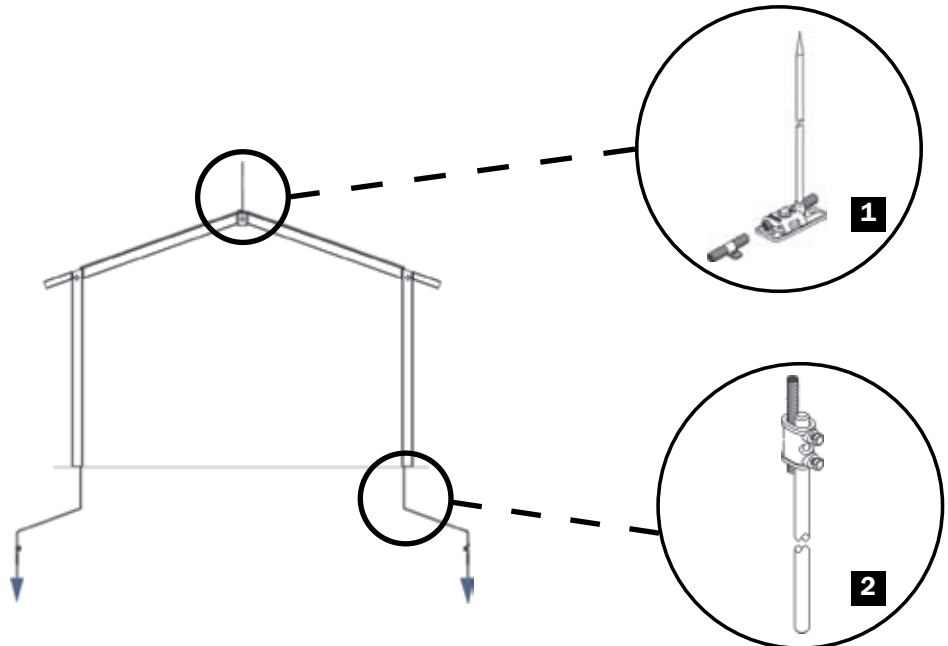
## Gable Roof Shelters

|        |      | Width |     |     |     |     |     |
|--------|------|-------|-----|-----|-----|-----|-----|
|        |      | 16'   | 20' | 24' | 30' | 40' | 50' |
| Length | 24'  | 6     | 6   | 9   |     |     |     |
|        | 34'  | 8     | 10  | 12  | 16  |     |     |
|        | 44'  | 12    | 14  | 18  | 20  | 30  |     |
|        | 64'  |       |     | 25  | 32  | 42  | 56  |
|        | 84'  |       |     | 37  | 40  | 55  | 73  |
|        | 104' |       |     |     | 52  | 79  | 90  |

## Square Shelters

|        | 12' | 16' | 20' | 24' | 30' | 36' | 40' | 50' |
|--------|-----|-----|-----|-----|-----|-----|-----|-----|
| Tables | 1   | 2   | 6   | 8   | 14  | 20  | 25  | 42  |

# LIGHTNING PROTECTION



Lightning protection systems provide a safe pathway for electrical charges from lightning to travel through, bypassing your structure and thereby protecting it from damage.

Lightning protection kit includes an air terminal assembly, conductor rods, ground clamps, ground rods and mounting hardware.

- 1** Conductor rod, mounting hardware
- 2** Ground rod, mounting hardware

# LOW REVEAL CLERESTORY & COLUMN COVERS



Standard Reveal Clearstory



S69- Low Reveal Clearstory

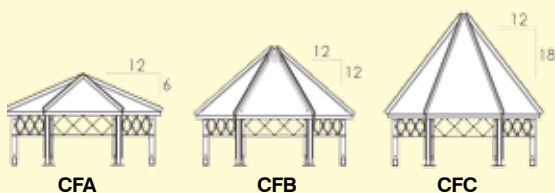


S43- Column Covers for Exposed Bolts

## CUPOLAS

Cupolas have a three-letter code system. Each three-letter code (i.e. "CMA") begins with "C" to indicate Cupola, followed by a second letter indicating the style, and a third indicating the pitch. Cupola size will be determined by building size, although specific size requests will be accommodated. Please consult with your sales representative for further details. Wood cupolas available upon request.

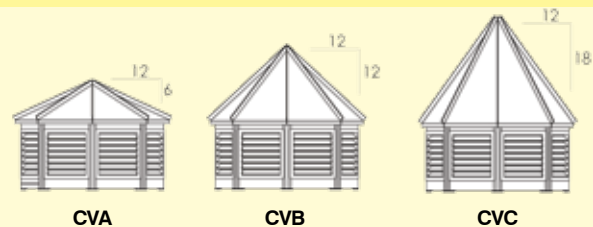
| C      | M   | A   |
|--------|---|---|
| Cupola | Cupola Style<br>Frame, Vented, Metal,<br>Neo Classic, SIP | Cupola Pitch<br>A=6:12, B=12:12,<br>C=18:12 |



**F** Frame w/ or w/o Ornamentation (Hexagon shown)  
Available for Square, Crossing, Gable Roof, Hexagon, Octagon, and Dodecagon shelters. Ornamentation is optional and can vary with shelter.



**M** Sheet Metal Non-Vented (Square shown)  
Available for Crossing, Gable Roof, Square, Hexagon, and Octagon shelters.



**V** Vented Frame (Octagon shown)  
Available for Square, Crossing, Gable Roof, Hexagon, Octagon, and Dodecagon shelters.



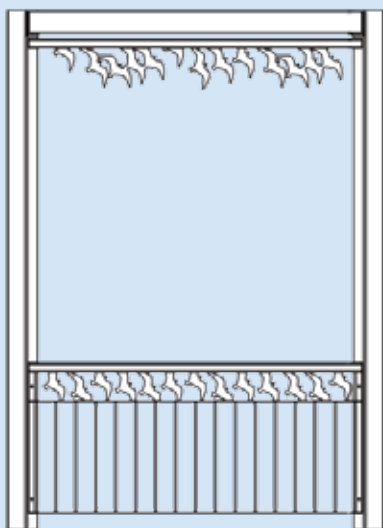
**N** NeoClassic Non-Vented  
Available for Square, Hexagon, Octagon, and Dodecagon shelters.



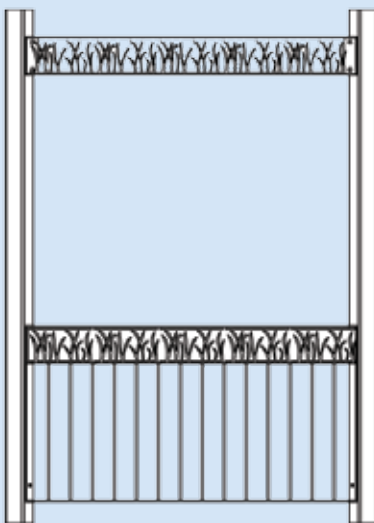
**S** SIP Panel Roof for Asphalt Shingles (Octagon shown)  
Available in 6:12 pitch for Hexagon, Octagon, and Dodecagon shelters.



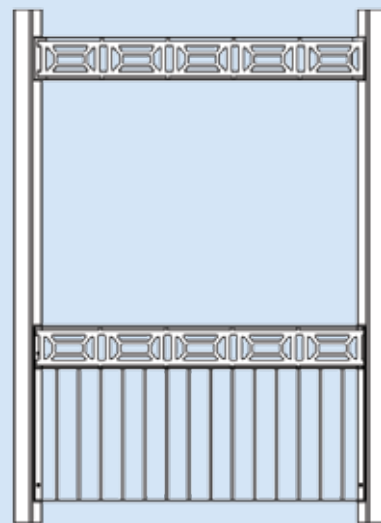
# RAILING & OVERHEAD ORNAMENTATION



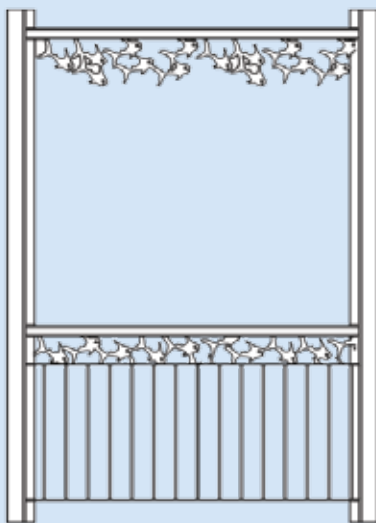
**Gull Railing and Overhead Ornamentation**  
O20



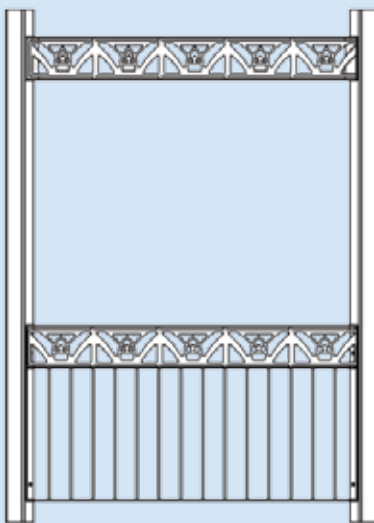
**Sea Grass Railing and Overhead Ornamentation**  
O22



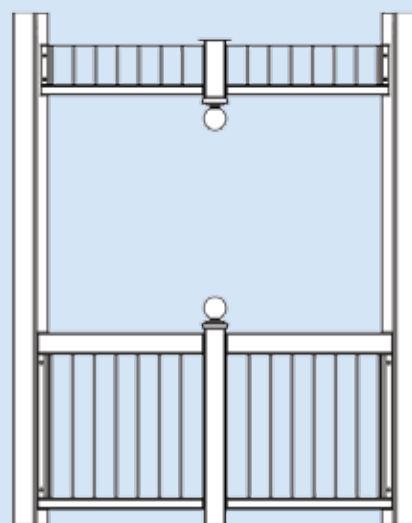
**Geometric Railing and Overhead Ornamentation**  
O23



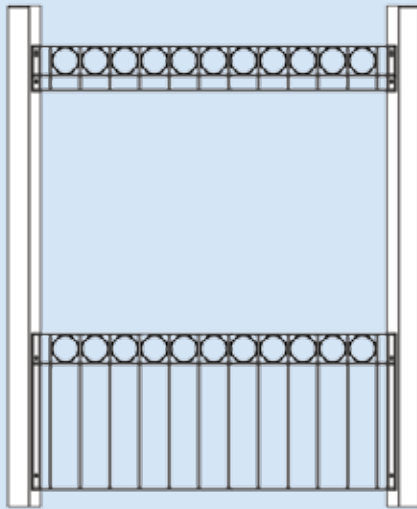
**Fish Railing and Overhead Ornamentation**  
O21



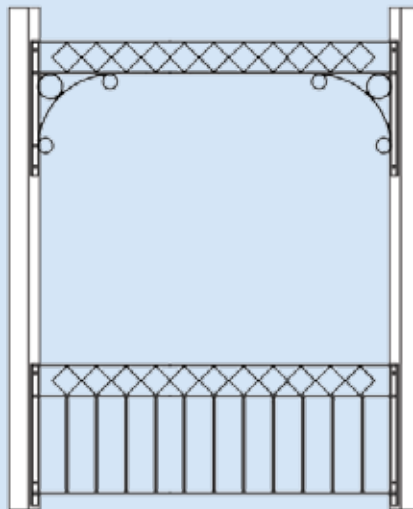
**Aztec Railing and Overhead Ornamentation**  
O24



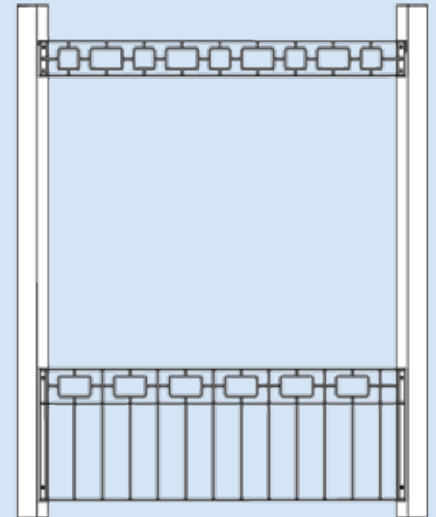
**Carmel Railing and Overhead Ornamentation**  
O2



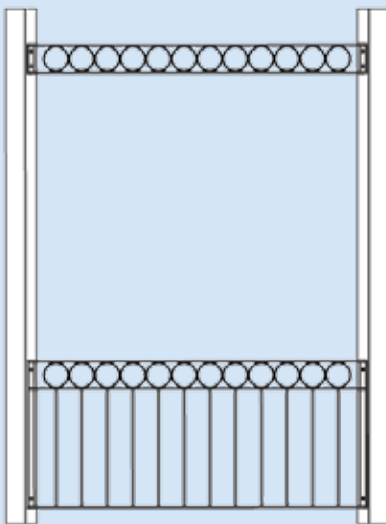
**Sarasota Railing and  
Overhead Ornamentation**  
O5



**Diamond Railing and  
Overhead Ornamentation**  
O1

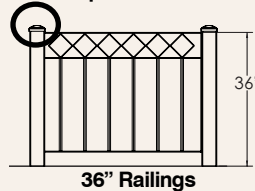


**San Jose Railing and  
Overhead Ornamentation**  
O4

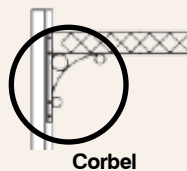
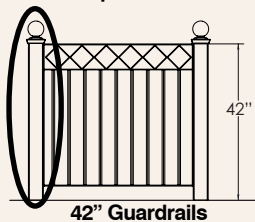


**Tampa Railing and  
Overhead Ornamentation**  
O6

**Standard Cap**



**Lower Stanchion  
with Cast Cap**



**Corbel**



**Upper  
Stanchion  
w/Cast Cap**

## Ornamentation Selection

### Overhead and Clerestory Ornamentation

Overhead ornamentation is available by itself or together with decorative railing and guardrail designs.

### 36" Railings

Railings are used to accent the shelter design and direct foot traffic throughout.

### 42" Guardrails

Code-compliant guard rails are a standard safety requirement when a building's walking surface is more than 30 inches above or below grade.

### Upper and Lower Stanchions

Stanchions are required when the ornamentation span exceeds 12 feet. All stanchions come with the standard cap. The cast stanchion cap is optional.

### Corbels

Corbels come standard with Diamond overhead ornamentation and are optional for any other style.

### Custom Design

To create unique look custom design for all ornamentation is available upon request.



# COLUMNS

- Columns come in a variety of shapes and sizes. Oversized square, round and rectangular columns are available with or without accent bands.
- Not all columns are available on all shelters. Consult Polygon for building specifics.
- Columns shown are for illustration only and are not meant to be standards. Bands can be placed in any quantity and most locations on any of the columns (with exception noted below).
- The maximum height for the column base access holes is 11" (center). Band location must allow the access hole to be placed within the lower 11" of the column.
- Column sizes can often be oversized for look but cannot be undersized because of structural requirements.
- Stub columns (K98) are available for mounting on masonry, bricks or pieces designed by others.



**Plain Square  
K01**



**Windsor  
K87**



**San Jose  
K85**



**Round  
K10**



**Dallas  
K81**



**Evans  
K82**



**Alma  
K80**



**Wooster  
K88**



**Neo Classic  
Fiberglass Wraps  
K83**



**Westminster  
K86**



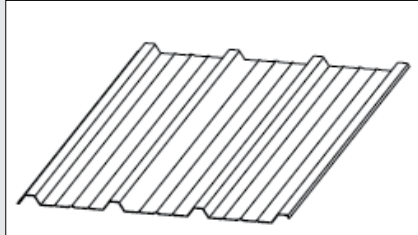
**Pyramid  
K84**

# ROOFING SYSTEMS

A variety of materials may be used for shelter roofs. They depend on the site, budget, long-term maintenance and owner preference.

Typical factory-supplied options are asphalt shingles, "R" panel or multi-rib, and standing seam metal roofing. All standard metal roofing is Kynar® painted over galvanized steel, which offers reduced color fade over time. Custom-blended colors may not be Kynar.

Multi Rib Roofing is most often used as an inexpensive combined roof and roof deck system. The 24-gauge galvanized steel panel comes with a Kynar color paint on the top and white prime paint on the ceiling surface. Multi Rib roofing is supplied pre-cut to length and angle. Poligon makes special trim with matching Kynar color trim as required. The metal roof deck is attached with exposed fasteners with gaskets. When metal roof deck is used alone as roofing, roof deck condensation can occur. If condensation is a problem, roofing should be used with a roof deck. Both 2x6 T&G or SIP panel roof decks with exposed wood ceilings are available.

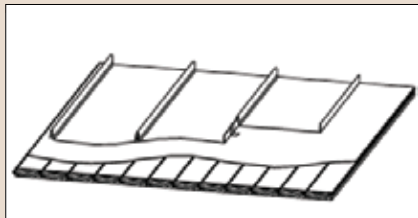


**Multi-Rib Roof Deck**



**Ribbed Metal Roof Ceiling**

Standing Seam Metal Roofing is another option. Standing Seam is furnished in Kynar colors, and avoids the through-roof screws seen in Multi Rib while creating a long-lasting and tighter system. Standing Seam uses a series of clips that are covered in a lapping seam system to attach to the roof. Standing seam roofing is not factory pre-cut to angle. Standing Seam does not have the span capability of Multi-Rib systems and may require more purlins when used alone. Standing Seam is most often used with a supporting roof deck. 2x6 T&G or SIP panels are good options here.



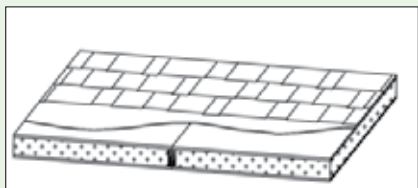
**Standing Seam Over T&G**



**Ceiling of T&G Planking**

T&G Wood Roof Deck of nominal 2x6 tongue and groove lumber makes for a warm interior finish. The random length 2x6 T&G is field cut and screwed in place in the field. In the field, the plank should be sealed with a weather resistant finish (supplied by others). Roof deck is always covered with a 30# felt supplied with a roofing package. If no roofing package is supplied, the felt must be supplied by others.

SIPs (Structural Insulated Panels) are preferred when an insulation system is required. Most common Poligon SIP roof panels are made with exterior rough sawn reverse board and batten 5/8" plywood with grooves 4" O.C. as a ceiling surface. The core is 3-5/8" EPS and the roof deck is 7/16" OSB. Another option for SIP ceiling surface is a white, embossed metal over OSB. These panels are tested and rated for structural loads as roof decks. 4-1/2" SIPs have an "R" value of 15.2. Asphalt shingles, shakes, Multi-Rib, and Standing Seam are roofing options to go over 2x6 T&G or SIPs, and can be furnished by Poligon. Tile or other roof options can be furnished by others.



**Shingles Over SIP Roof Deck**



**SIP Panel Ceiling**



# POLI-5000®

The Most Durable Frame Finish Available

**Poli-5000 is a completely in-house process, performed and overseen by PorterCorp.**

Steps include:

- Eight-direction shot blasting of steel to near white
- Wash and iron phosphate treatment
- Special epoxy primer powder coat base
- Super Durable TGIC powder top coat
- Baking and curing
- Inspection and packaging

Why Poli-5000?

- Superior performance results over traditional powder coat
- Reduced overall cost and a better finish than field painting over factory applied red oxide primers
- No VOC's with Poli-5000
- More environmentally friendly than liquid paint, ecoat primer, and zinc rich primer systems
- Ten times the salt spray performance over catalyzed epoxy systems
- Reliable in-house inspection of all parts
- Upgrade from 'standard' to Super Durable TGIC provides superior color and gloss retention as well as corrosion resistance
- No need for clear top coats (that make touch-up blotchy) when using Super Durable TGIC
- Large offering of 28 standard colors

| Test Description      | Test Method   | Poli-5000 Results  |
|-----------------------|---|--|
| Salt Spray Resistance | ASTM B 117/ ASTM D 1654 Method 2 (scraping)   | 5,000 hours, no creep from scribe line, rating of 10   |
| Humidity              | ASTM D2247-02   | 3,000 hours with no loss of adhesion or blistering   |
| Light UV/ Resistance  | ASTM G154-04 2000 hours exposure. Alternate cycles (4 hours UVC and 4 hours condensation) | a) No chalking b) 75% color retention c) Color variation-maximum 3.0 E variation CIE formula (before and after 2,000 hours exposure)               |
| Stain Resistance      | ASTM D1308-02e1 24 hours exposure with 10% concentration                                  | No stain from following: Mustard, Tannic Acid, Catsup, Citric Acid, Coffee, Tartaric Acid, Pepsi Cola, Beer, Oleic Acid, Lactic Acid, Orange Juice |
| Scratch Resistance    | Hoffman Scratch Hardness Tester   | No substrate appearance with 1,000 gram load   |
| Adhesion              | ASTM D3359-02   | ASTM Class 4B rating or better   |
| Resistance Impact     | ASTM D2794-93   | 100 in-lbs. w/o cracking   |
| Hardness              | ASTM D3363-92a  | 2H min-no indentation  |
| Flexibility           | ASTM D522-93a   | 1/8" no cracking/loss of adhesion at bend  |
| Abrasion              | Taber abraser CS10 Wheel (1,000 mg load)  | 14 mg. max weight loss per cycle   |
| Solvent Resistance    | 50+ MEK rubs  | Minimal to no dulling or color removal   |

## Poligon Alternate Finishes

**"E"-Coat Undercoating** combines a dip process with an electro-deposition applied epoxy coating that bonds to the steel. The combination of "E"-coating and powder coating is a durable finish, and is comparable to Poli-5000. Because "E"-Coating is an electric depositing process, a "Faraday Effect" is created where acute angles and tube interiors create a short circuit and "E"-Coating is not deposited. Tests have also shown (contrary to common belief) that "E"-coating does not deposit coating inside of tubes any further than a long-nozzled powder coat gun.

**Prime Coat Only for Field Painting** When prime painting-only is requested, Poligon provides a superior job by first shot blasting then priming with a special powder-gray powder coat. This system is highly preferred over the hand wiping with rags and red oxide primer systems found elsewhere.

**Hot Dip Galvanizing** is a simple, long-accepted method of protecting steel from rust. It works best on plain sheets, basic tubes and other uncomplicated parts, resulting in a rough, spangled silver finish. It provides the best corrosion protection in salt-air conditions, and is also the most costly finishing option. Hot Dip Galvanizing is recommended for use in conjunction with field painting, and is not recommended as a base for powder coating. Painting over Hot Dip Galvanizing is best accomplished several months after erection and field exposure.

**NEW** for 2009, exposed washers, nuts, and bolts added to the list of powder coated parts for shelters.



# FRAME AND ROOF COLORS

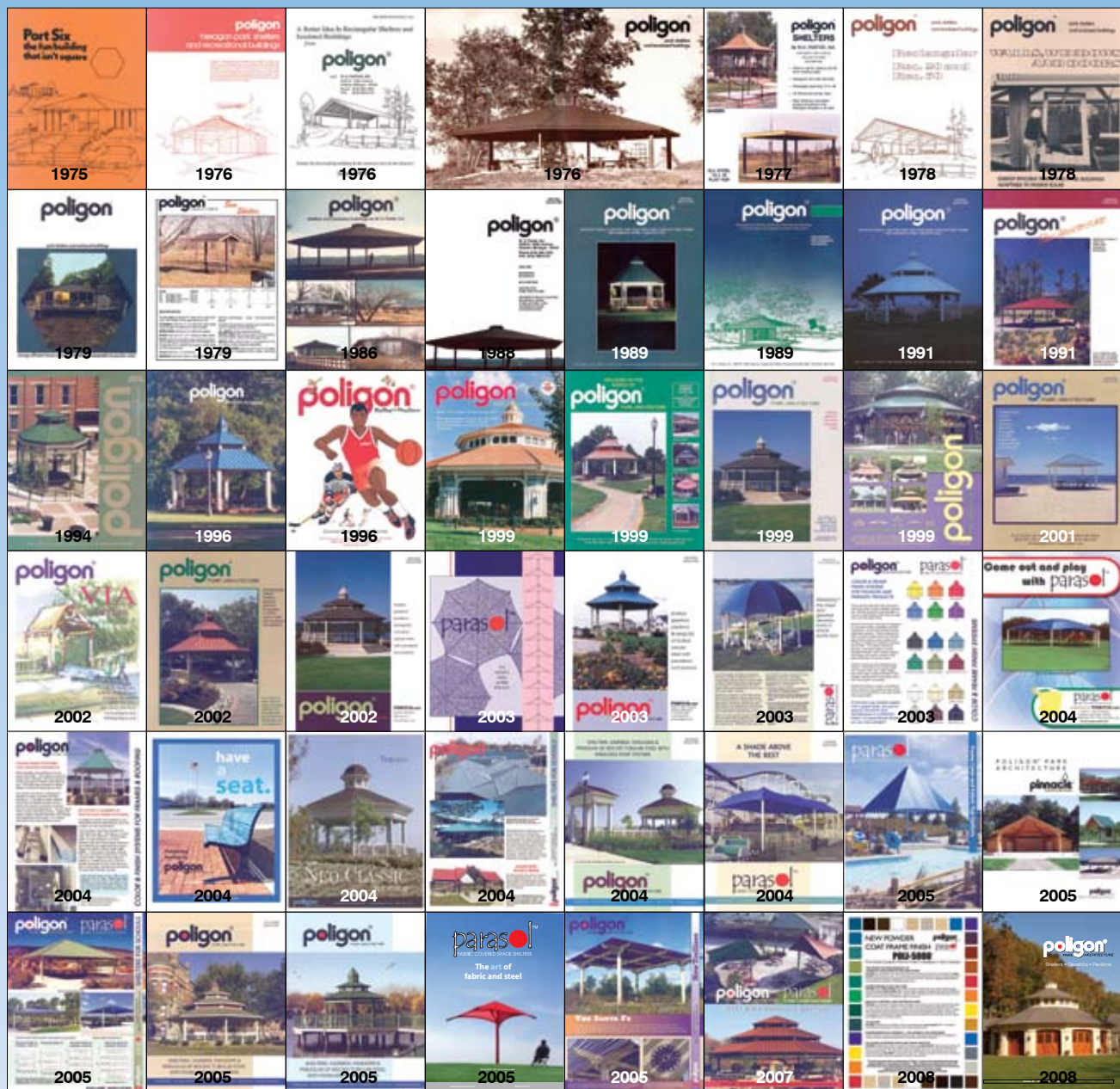
|  |   |   |   |   |   |  |  |
|--|---|---|---|---|---|--|--|
|   |    |    |    |    |    |   |   |
| <b>Daffodil</b>  | <b>Marigold</b>   | <b>Red Baron</b>  | <b>Architectural Red</b>  | <b>Colonial Red</b>   | <b>Brandywine</b>   | <b>Iris</b>  | <b>Hyacinth</b>  |
| • TGIC Frame+  | • TGIC Frame+   | • TGIC Frame+<br>• Multi-Rib Roof+<br>• Standing Seam Roof+                         | • TGIC Frame<br>• Multi-Rib Roof<br>• Standing Seam Roof+                           | • TGIC Frame<br>• Multi-Rib Roof+<br>• Standing Seam Roof                           | • TGIC Frame+<br>• Multi-Rib Roof+<br>• Standing Seam Roof+   | • TGIC Frame+  | • TGIC Frame+  |
|   |    |    |    |    |    |   |   |
| <b>Delft Blue</b>  | <b>Roman Blue</b>   | <b>Teal</b>   | <b>Patina Green</b>   | <b>Pompano Green</b>  | <b>Lily pad</b>   | <b>Evergreen</b>   | <b>Eastern Green</b>   |
| • TGIC Frame+<br>• Multi-Rib Roof+<br>• Standing Seam Roof+                        | • TGIC Frame<br>• Multi-Rib Roof<br>• Standing Seam Roof                            | • TGIC Frame+<br>• Multi-Rib Roof<br>• Standing Seam Roof                           | • TGIC Frame<br>• Multi-Rib Roof<br>• Standing Seam Roof                            | • TGIC Frame<br>• Multi-Rib Roof<br>• Standing Seam Roof+                           | • TGIC Frame  | • TGIC Frame<br>• Multi-Rib Roof<br>• Standing Seam Roof                             | • TGIC Frame   |
|  |   |   |   |   |   |  |  |
| <b>Almond</b>  | <b>Ash Gray</b>   | <b>Surrey Beige</b>   | <b>White</b>  | <b>Patrician Bronze</b>   | <b>Dark Bronze</b>  | <b>Bumper Black</b>  | <b>Tudor Brown</b>   |
| • TGIC Frame<br>• Multi-Rib Roof<br>• Standing Seam Roof+                          | • TGIC Frame<br>• Multi-Rib Roof<br>• Standing Seam Roof                            | • TGIC Frame<br>• Multi-Rib Roof<br>• Standing Seam Roof                            | • TGIC Frame<br>• Multi-Rib Roof<br>• Standing Seam Roof                            | • TGIC Frame<br>• Multi-Rib Roof+<br>• Standing Seam Roof                           | • TGIC Frame<br>• Multi-Rib Roof+<br>• Standing Seam Roof   | • TGIC Frame   | • TGIC Frame<br>• Multi-Rib Roof<br>• Standing Seam Roof+                            |
|  |  |  |  |  | <div>                     + Upcharge for this selection.<br/>                     Consult factory for pricing and lead time.                 </div> |  |  |
|  | <b>Sandstone Metallic</b>   | <b>Pedestal Gray</b>  | <b>Streak Blue</b>  | <b>Copper Penny</b>   |   |  |  |
|  | • TGIC Frame+<br>• Multi-Rib Roof+<br>• Standing Seam Roof+                         | • TGIC Frame  | • TGIC Frame  | • TGIC Frame+<br>• Multi-Rib Roof+<br>• Standing Seam Roof+                         |   |  |  |

The most important factors contributing to Poligon's success and repeatedly delivering high quality shelters are our paint line operators. These craftsmen take great pride in their work and realize they are not just painting, but finishing shelters that will become important landmarks and symbols of a community's image.

Expect the best for your community – make sure you specify Poli-5000.







## The Evolution of Tubular Steel Shelters

**poligon**<sup>®</sup>  
PARK ARCHITECTURE

**parasol**<sup>™</sup>  
FABRIC COVERED SHADE SHELTERS

**pinnacle**<sup>™</sup>  
WOOD SHELTERS

**adapt**<sup>™</sup> **porterSIPS**<sup>™</sup>  
FRAME + PANEL BUILDINGS structural insulated panels

**PORTERCORP**<sup>™</sup>

Innovating building systems since 1964

PORTERCORP

4240 N. 136th ave. - Holland, MI 49424

www.poligon.com • 800.354.7721 • Copyright ©2008 L924